

USE AND MAINTENANCE MANUAL

VERTICAL GRIP MANUAL DAV 300 VOLUMETRIC VALVE



Summary

1	GENERAL INFORMATION	1
1.1	SYMBOLY	2
1.2	REFERENCE STANDARDS	3
1.3	DECLARATION OF INCORPORATION (ANNEX II B DIR. 2006/42/EC)	4
1.4	GLOSSARY	5
1.5	SERVICE AND MANUFACTURER CONTACT DETAILS	6
2	PRESENTATION AND OPERATION	7
2.1	EXPLODED	12
2.2	TECHNICAL DATA	14
3	SAFETY	16
3.1	MACHINE SAFETY DEVICES	17
3.2	FREE USEFUL SPACES	17
3.3	RISK AREAS AND RESIDUAL RISK	17
4	TRANSPORT AND HANDLING	17
5	INSTALLATION	18
5.1	POSITIONING	18
5.2	CONNECTIONS	18
5.2.1	Electric	19
5.2.2	Pneumatic	19
5.3	COMMISSIONING	19
6	SOFTWARE	20
7	PROCEDURE	20
7.1	FIRST START	21
7.2	MICROMETRIC ADJUSTMENT	21
8	MAINTENANCE	22
8.1	DISASSEMBLY AND REASSEMBLY OF THE VALVE	24
9	TROUBLESHOOTING	29
10	END OF LIFE	30

1 GENERAL INFORMATION

This manual contains information regarding the installation, use, maintenance and end of life of the component and provides indications for the most suitable behavior for correct operation. This manual has been designed to be simple and as straightforward as possible, with a subdivision into chapters and sub-chapters that allows you to find any information you need quickly. In addition, the manual begins by giving a general description of the contents, then an overview of the component, to arrive at aspects of safety, transport, installation and use and finally to the end of life. If you have any doubts about the interpretation or reading of this document, please contact the manufacturer.



DAV Tech declines any responsibility relating to improper use of the component. Observe the specifications in this manual.



Read this manual before handling the component or performing any action on it.



The manual is an essential safety requirement and must accompany the component throughout its life cycle.

It is the task of the end user to optimize the functionality of the component, always considering the purpose for which it was built.



You are asked to keep this manual, together with the attached documentation, in good condition, legible and complete. In addition, it must be stored in the vicinity of the component or, in any case, in a place accessible and known to all personnel who use the component itself or who must perform maintenance or inspection interventions. If the manual deteriorates or is no longer complete, a copy must be requested from the manufacturer, indicating the code of the manual and the revision.



The manual is intended for personnel who use the component (operators), who perform maintenance on it (maintenance technicians), and for personnel who must perform checks or inspections. The manufacturer is not liable for damage to the component caused by personnel who have not followed the instructions in the manual.

If you have any doubts about the correct interpretation of the information contained in this manual, please contact the manufacturer.

GUARANTEE

During the design phase, a careful choice of materials and components to be used in the project was made and they were subjected to regular testing before delivery. All elements have been designed and manufactured with an adequate degree of safety, such as to be able to withstand stresses greater than those of normal use.

The warranty is valid for a period of 12 months from the date of commissioning and in any case no longer than 15 months from the date of delivery. Work carried out during the warranty period does not extend the warranty period in any way.

The manufacturer is not liable for defects due to normal wear and tear of parts which, by their nature, decay.

1.1 Symbology

Below are the symbols that are used to give a greater impact to the importance of the concept you want to give.



ATTENTION!

Refers to a warning that could lead to minor damage (minor injuries, damage to the component requiring maintenance work).



DANGER!

It refers to a major event that could cause major damage (death, permanent injury, irreversible breakage of the component).



NOTE. Indicate relevant information or insight.



OBLIGATION. It indicates a task that must be performed, related to both the component and the manual.



REFERENCE. Links to an external document that is important to view

In addition, the list of symbols is integrated with that of the personnel responsible for using the component and its function, together with other symbols used within the manual.



Operator

A (qualified) person capable of operating the component, adjusting, cleaning, starting or resetting the component. The operator is not authorized to perform maintenance.



Mechanical maintenance technician

Qualified technician able to carry out mechanical, adjustment, maintenance and routine repair work described in this manual. He is not authorized to carry out interventions on electrical systems in the presence of voltage.



Electrical maintenance technician

Qualified technician able to carry out electrical, adjustment, maintenance and routine repair work described in this manual. It can work in the presence of voltage on electrical cabinets and junction boxes. He is not authorized to carry out interventions on the mechanical side.



Manufacturer's technician

Qualified technician made available by the manufacturer to carry out operations of a complex nature in particular situations, or in any case as agreed with the customer.

1.2 Reference standards

The reference standards and directives of this manual are the following:

Directives

- 2006/42/EC – Machinery Directive;
- 2014/30/EU – EMC Directive (Electromagnetic Compatibility)

1.3 Declaration of incorporation (Annex II B DIR. 2006/42/EC)

Manufacturer's name: DAV Tech Srl
Address: Via G. Ravizza, 30, .36075, Montecchio Maggiore (VI)

DECLARES THAT THE QUASI MACHINE

Component: DAV 300 MANUAL valve
Model: Vertical manual volumetric dosing valve
Year: 2024
Intended use: Volumetric dispensing of fluid to any viscosity

COMPLIES WITH THE INCORPORATION PROVISIONS OF DIRECTIVE 2006/42/EC

The technical documentation has been drawn up in accordance with Annex VII B, as required by the following:

- Machinery Directive 2006/42/EC of the European Parliament and Council of 17 May 2006
- **2014/30/EU:** of the European Parliament and of the Council of 26 February 2014 on the harmonization of the laws of the Member States relating to electromagnetic compatibility (recast).

IT ALSO DECLARES THAT:

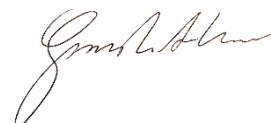
- Undertakings are undertaken to provide, in response to a properly substantiated request from the national authorities, relevant information on this partly completed machine;
- The technical file was prepared by Andrea Grazioli, via Ravizza, 30, Montecchio Maggiore (VI), IT.

This quasi-machine cannot be used until the machinery on which it will be used is declared compliant with regulation 2006/42/EC.

Montecchio Maggiore, 21 May 2024

The legal representative

Andrea Grazioli



1.4 Glossary

The following are the most used terms within this manual with their meanings.

TERM	DEFINITION
Enable	Term that defines the act of preparing (enabling) an action. The action will be triggered as soon as the criteria are met, which consequently leads to the activation of the enabled action.
Active	The action that is performed instantaneously when the control is activated.
Human controls	This defines those commands that, used for manual operations, must be kept activated for the action to be performed. When the command is released, the action stops.
Two-hand controls	Human-controlled controls that require two manual controls to be operated simultaneously to perform an action.
P.P.E.	Personal protective equipment. They include all the items necessary to ensure the protection of personnel from possible accidental damage (safety shoes, gloves, helmet, and more).
Display	It is used to display information. It can be in any shape and size, even touch screen.
Manufacturer	Natural or legal person who designed and manufactured the component covered by this manual.
HP	High Pressure. An acronym that indicates high pressure.
Icon	A small image that represents a command, a function or even a document or an operating program, which appears on a computer screen. When selected by the user, it initiates the function or program it symbolizes.
Joystick	Lever manipulator used in control panels.
N.A.	Not Applicable, i.e. it indicates that it is a field that does not apply to this manual and that it cannot be integrated into the component.
Operator panel	A control station where the machine control instruments are located
P.I.	Possible Implementation, i.e. it is currently absent from the component described in this manual, but it is possible to make an addition and implement it.
Screen	Interface system between man and component. Screenshots are the images displayed on the operator panel that allow the user to receive and provide information to the management software.
Push-button panel	Composition of buttons and selectors that allow you to act directly on the behavior of the component.
Keyboard	Keyboard only (stand-alone element) or in addition to a display (keys only, no selectors or other)
Touch screen	Touch screen that allows the user to interact with a graphic interface using their fingers or objects.

1.5 Service and manufacturer contact details

For any reason relating to the use, maintenance or request of spare parts, the customer must contact the manufacturer (or the service center if present) directly, specifying the identification data of the component.

The customer can make use of the technical and commercial support of local agents or importers, who are in direct contact with the company DAV Tech Srl.

Company name	DAV Tech Srl
Postal address	Via Ravizza, 30, 37065, Montecchio Maggiore (VI) – (IT)
Telephone	+39 0444 574510
Fax	+39 0444 574324
email	davtech@davtech.it
Website	www.davtech.it

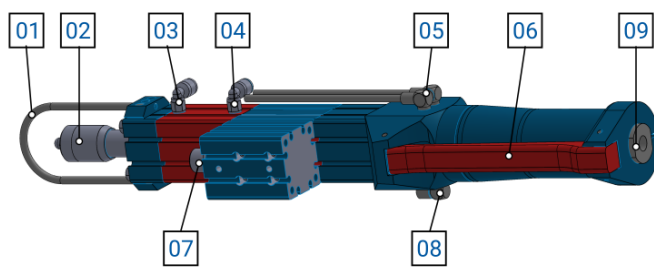
2 PRESENTATION AND OPERATION

In this manual we want to learn more about the operation of the manual DAV 300 valve in "vertical" mode, i.e. the model with the handle that allows you to have an ergonomic grip to be able to use the valve vertically. This model allows dosing only in vertical mode, without the need to use solenoid valves, since dosing is controlled by a handle by the operator. It also can have objectification sensors, both for dispensing done and rest mode.

In other words, the function of this component is:

MANUAL VOLUMETRIC DISPENSING OF FLUID TO ANY VISCOSITY

Intended use is the use described in the chapter below, while improper use is considered any other use that is not described in this manual, with products of different material and format from those for which it was built.



No. DESCRIPTION

- | | |
|----|---|
| 01 | Handle |
| 02 | Micrometric adjustment |
| 03 | Dosing air inlet |
| 04 | Charging air inlet |
| 05 | Fittings to bring air to the pneumatic chambers |
| 06 | Dosing start handle |
| 07 | Fluidic inlet |
| 08 | Pneumatic inlet |
| 09 | Fluid output |

Figure 01 – Detail DAV 300 MANUAL VERTICAL

Before using a certain type of fluid, it is necessary to check that:

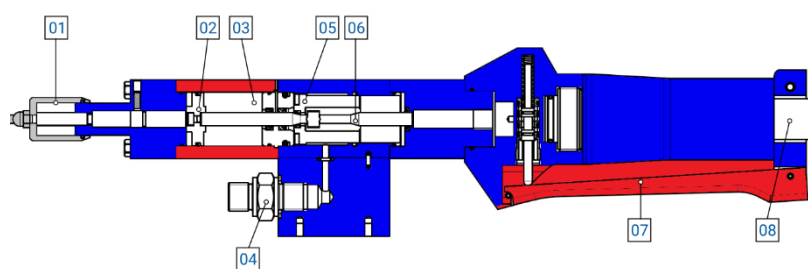
- The viscosity of the fluid is compatible with the characteristics of the valve;
- The characteristics of the fluid meet the desired requirements;
- The technical data sheet of the fluid provided by the manufacturer contains all the information regarding the product such as viscosity, applications, drying times and storage;
- The fluid storage time has not been exceeded;
- The fluid packages are tightly sealed.

If it is necessary to use several fluids with the same valve, it must be cleaned thoroughly to prevent residues from the previous processing from affecting the processing to be performed.

SPECIAL VERSIONS

N.A.

OPERATION



No.	DESCRIPTION
01	Micrometric adjustment
02	Pneumatic piston
03	Pneumatic chamber
04	Fluid inlet
05	Piston
06	Pin
07	Handle
08	Fluid output

Figure 02 – DAV 300 MANUAL internal section

This valve, being manual, only needs a pneumatic connection, without the need for solenoid valves. Based on the position of the handle, the pneumatic flow is diverted to load one chamber rather than the other. The only setting for adjusting the product flow is by micrometric adjustment.

For minimum working pressures, please refer to [Chapter 2.2](#).

The valves cannot operate autonomously. To ensure that it dispenses product, they must be connected to a power source, which can be a tank, a pump or other, depending on the system and the customer's needs.



ATTENTION!

It is recommended to connect the valves to the sources indicated in this manual in [chapter 2.2](#). Connecting them to other sources or products with features not listed in this manual may break them.

The valves are also equipped with an adjustment screw, which is used to determine how much product to dose. In practice, the adjustment of the pin determines, together with the pressure of the material and the opening time, the quantity of product dispensed. To use the screw, you can turn clockwise to decrease the stroke of the needle and, therefore, the amount of fluid dispensed (until it is completely closed); Turning in the other direction increases the amount of fluid delivered.

Below we want to explain the operation of the DAV 300 MANUAL.

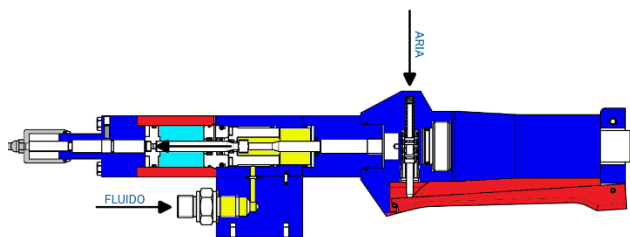


Figure 03 – Resting phase

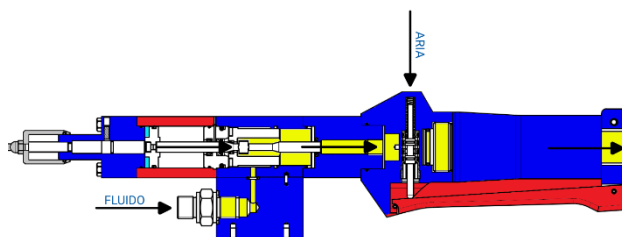


Figure 04 – Dosing Phase

The fluid is constantly pushed inside the valve and into the fluidic chamber, to keep it always under pressure and ready to perform dosing. Basically, the air is diverted inside the charging chamber, so as not to dose. When the operator presses the handle, the air is diverted into the other chamber, pushing the needle forward and, therefore, also the piston, discharging the contents of the charge where the valve is looking. Only the current contents of the chamber are discharged, so this valve has a punctual and non-continuous type dosing. Once he has finished dosing, the operator must release the handle, so that the fluidic chamber can be recharged and return to its initial condition. So, in general, the toggle sequence is as follows:

- The fluid is ready to exit into its special chamber (Figure 03);
- The needle is closed thanks to the air it keeps under pressure;
- The operator presses the handle, which changes the path of the air;
- The needle is pushed forward, together with the piston;
- The fluidic chamber is emptied, and dosing is performed (Figure 04)
- Once the dosage has been performed, the operator releases the handle;
- The air returns to the starting path, then pushes the needle and piston back;
- The fluidic chamber is refilled so that it is ready for another dosage (Figure 03)

USEFUL TIPS

- The smaller the amount of fluid to be dosed, the smaller the nozzle size must be;
- The distance between the nozzle and the surface is crucial, because if the nozzle is too far away, there is no proper adhesion to the surface and therefore the fluid is sucked in. Therefore, the distance between the nozzle and the surface must be adjusted according to the amount of fluid to be dosed;
- In general, it is recommended to use a conical nozzle (the overall dimensions must be considered);
- The higher the pressure of the fluid, the more the fluid adheres to the surface. If desired, by increasing the grease pressure, the valve can be moved away from the surface itself (always consult the technical office or tests on this aspect);
- The objectification sensor may not take correct readings if the valve opening is less than 20%. If you must use it in this mode, you can request a special sensor;
- A sensor can also be used to objectify the closure of the valve;
- If you must use a custom nozzle, you must pay attention to the length of the thread, which, if too long, impacts with the advance of the needle, risking ruining it and, above all, risking that the dosage does not take place, given the operation of the valve;
- It is possible to heat the fluid through special circuits in case its viscosity needs to be decreased.

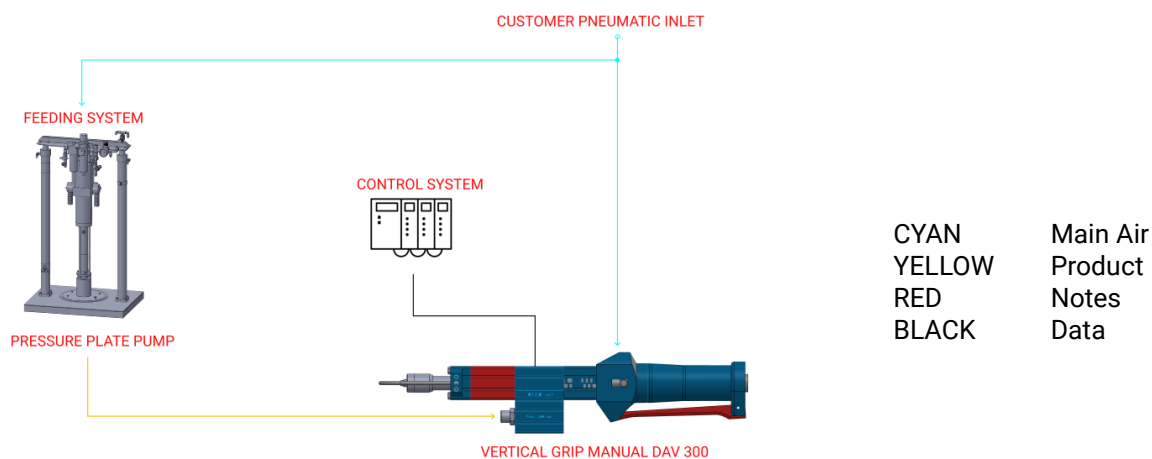


Figure 05 – Connection example

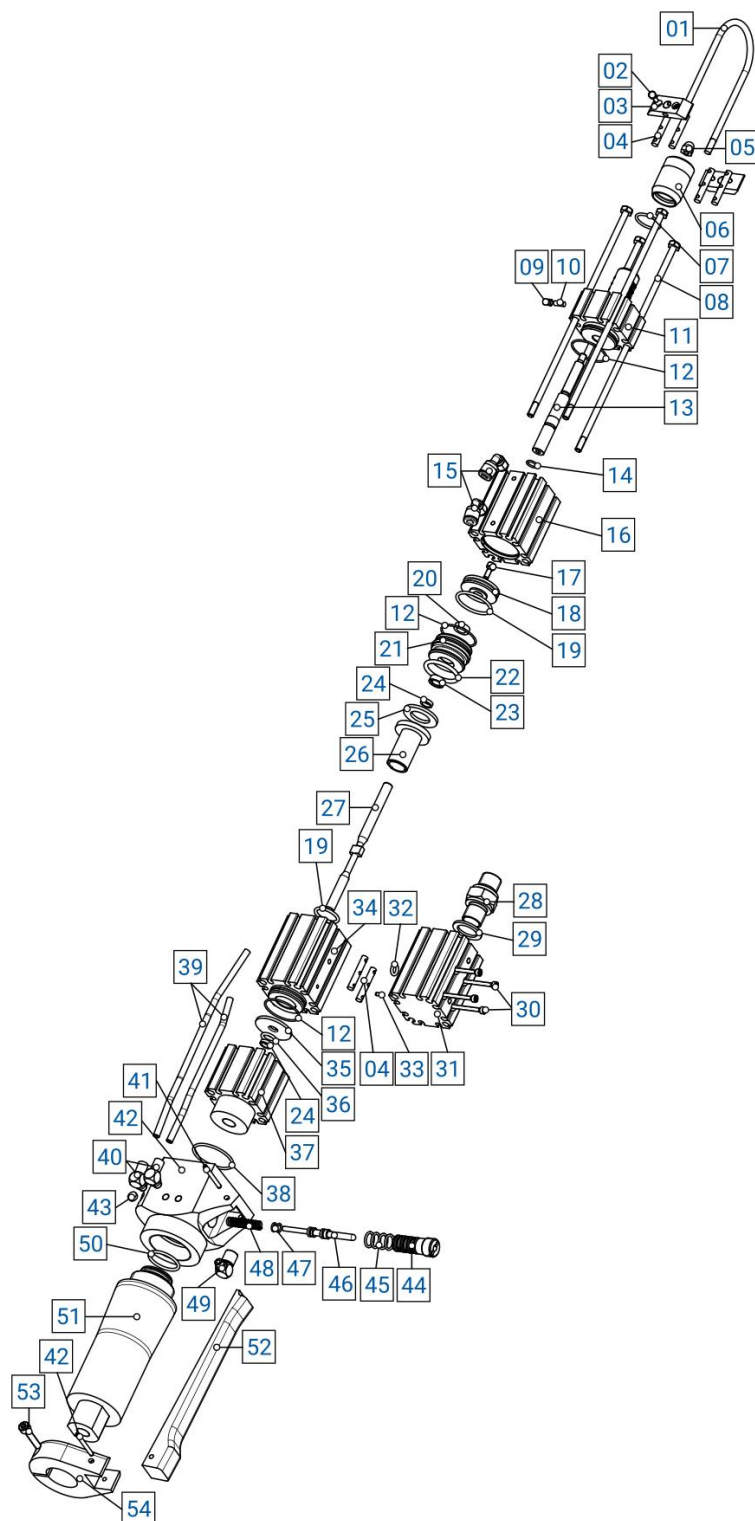


ATTENTION!

The air entering the valve must be filtered and without water (dried), otherwise it risks forming oxide inside the component and wearing it out more quickly.

2.1 Exploded

The following is a list of the main valve components with spare part numbers.



No.	Description	Var.	Code	Variant details
01	HOOK	-	0002008	-
02	FLAT HEAD ROUTES	-	8423900	-
03	FIXING PLATE	-	0002007	-
04	NUT	-	0002213	-
05	BLIND NUT	-	8411000	-
06	MICROMETRIC ADJUSTMENT	-	0001588	-
07	O-RING	-	8227700	-
08	SCREW	-	0005147	-
09	SCREW	-	8512700	-
10	PIN	-	0001589	-
11	BODY ADJUSTMENT	-	0004918	-
12	O-RING	-	8232100	-
13	STOPPER	-	0001587	-
14	O-RING	-	8222500	-
15	AIR CONNECTION	-	8634201	-
16	PNEUMATIC BODY	-	0004919	-
17	FLAT HEAD SCREW	-	8424105	-
18	PNEUMATIC PISTON	-	0001591	-
19	O-RING	-	0001590	-
20	UPPER LIP GASKET	-	8365000	-
21	BUSH	-	0005113	-
22	O-RING	-	0005121	-
23	LOWER LIP SEAL	-	8331100	-
24	SCRAPER	-	8223201	-
25	MAGNETIC RING	-	0001528	-
26	VOLUMETRIC CHAMBER	-	0001583	-
27	PIN	-	0001586	-
28	NIPPO INLET	-	0004850	-
29	MOULDED GASKET	-	8259500	-
30	SCREW	-	0001593	-
31	CONNECTION BODY	-	0004923	-
32	O-RING	-	8221400	-
33	SCREW	-	8460002	-
34	INTERMEDIATE BODY	-	0004920	-
35	WASHER	-	0005384	-
36	O-RING	-	8223200	-
37	FRONT BODY	-	0004922	-
38	O-RING	-	8233000	-
39	BLACK TUBE	-	8589400	-
40	AIR CONNECTION	-	8589100	-
41	SCREW	-	8461700	-
42	GRIP HEAD	-	0002026	-
43	SINTERED DISC	-	4222200	-
44	HANDLE VALVE BODY	-	4241500	-
45	O-RING	-	8223705	-
46	PISTON VALVE HANDLE	-	4222001	-
47	O-RING	-	8220900	-
48	GRIP SPRING	-	8135000	-
49	AIR CONNECTION	-	8589102	-
50	O-RING	-	8229301	-
51	GRIP BODY	-	4247100	-
52	HANDLE	-	4247300	-
53	FLAT HEAD SCREW	-	8424304	-
54	FRONT BODY HANDLE	-	4247200	-
\	COMPLETE GASKET KIT	-	GASKETKIT-DAV300400	Missing handle seals

2.2 Technical data

All the technical characteristics concerning the component of this manual are indicated below.

SPECIFICATIONS		
Description	UdM	Values
Model	\	DAV 300 MANUAL VERTICAL
Activation	\	Manual
Fluidic pressure range	bar	20 ÷ 200
Air pressure for the drive	bar	5 ÷ 7
Air inlet thread	\	M3 Ø4mm
Fluid inlet thread	\	1/4 GAS
Dispensable quantity	cm ³	0.1 – 2
Fluid outlet thread	\	GAS threaded nozzle 1/8"
Maximum fluid output speed	cycles/min	30
Passage adjustment	\	Micrometric
Materials used	\	Stainless steel
		Anodized aluminum

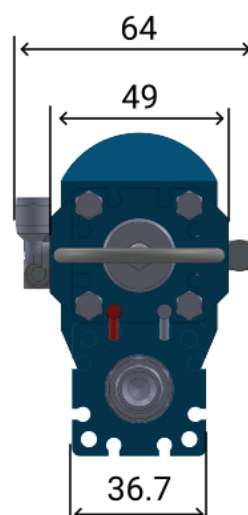
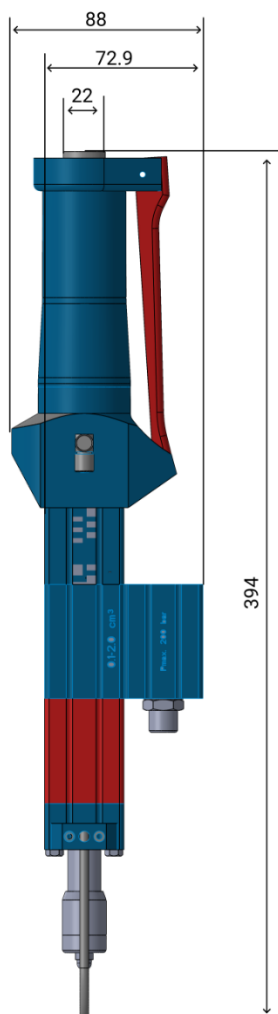
ENVIRONMENTAL CHARACTERISTICS		
Description	UdM	Values
Working Ambient Temperature	°C	5 ÷ 45
Storage Ambient Temperature	°C	-20 ÷ 55
Permissible non-condensing humidity	%	5 ÷ 90

USABLE FLUIDS		
Greases		
Lubricants		
Miscellaneous products up to 10 ⁶ mPa s		

DIMENSIONAL AND WEIGHT CHARACTERISTICS

Description	UdM	Value
Component length (min ÷ max)	mm	394
Component depth (min ÷ max)	mm	64
Component height (min ÷ max)	mm	88
Component weight	kg	1.27

Component



You can request the 3D of the component in the desired version from the manufacturer without any obligation.

3 SAFETY

The following is a list of warnings regarding the component covered by this manual. Please read carefully before proceeding to the next chapters.



DANGER!

Before operating the component or performing any action on it, read this manual carefully.



DANGER!

Do not use the component while under the influence of drugs or other substances that may impair attention and reaction ability.



DANGER!

Operators must only perform operations or interventions that are within the competence of the role and qualification assigned.



FIRE/EXPLOSION HAZARD!

This component is not designed to work in an ATEX environment.



DANGER!

Be very careful when servicing the component, especially when disassembling components that have pressure springs inside.



ATTENTION!

Modifications to the component must not be made to achieve performance other than that for which it was designed and built, unless authorized by the manufacturer.



ATTENTION!

Avoid introducing foreign bodies, even small ones, into the pneumatic system, which could cause the system to malfunction and compromise the safety of the machine.



The component may only be used by trained and authorized operators and for the sole purpose for which it was designed and manufactured.



The component is manufactured in compliance with the technical safety standards in force at the time of its construction.

3.1 Machine safety devices

N.A.

3.2 Free useful spaces

N.A.

3.3 Risk areas and residual risk

N.A.

4 TRANSPORT AND HANDLING

Once you have received the goods, you must check that the packaging is intact and that there is an exact correspondence with the material ordered.



ATTENTION!

The original configuration of the component must not be changed. The manufacturer is not liable for damage caused by inappropriate use of the component.



ATTENTION!

If the packaging is not intact, contact the manufacturer immediately, also sending photos of the condition of the packaging. Do not open it until you have notified the manufacturer.

5 INSTALLATION



The installation of the component is carried out by the customer. If necessary, you can contact the manufacturer to have a specialist technician help you.

The valve has been designed to be used as a manual valve; therefore, with an operator who commands when it must open and close and who must position it correctly. In addition, the valve is equipped with a hook at the rear to which it can be secured in case you need to take breaks.



It is recommended that you perform a component check before beginning the installation. If it is evidently damaged, please contact the manufacturer.



ATTENTION!

Please remove the packaging with the utmost care. If damage is caused to the component, the manufacturer is not liable.



Dispose of the packaging correctly, considering the different nature of the components and following the regulations in force in the country.

5.1 Positioning







N.A.

5.2 Connections

In this chapter, we want to explain the connection method that must be used for the component. The following types of connection are provided:

- Electrical connection;
- Pneumatic connection;

5.2.1 Electric







Authorized personnel		PPE to wear					
Component status	Installed component						
Power Values	See chapter 2.2						
Necessary preparations	\						
Materials needed	\						
Equipment needed	\						



The electricity connection is at the expense of the customer.

For this type of valve, there is an electrical installation that concerns only the sensor side, i.e. the limit switches on the valves. In this case, to be able to read the values and to be able to make the opening and closing of the valve automatic, the sensor cables must be connected to the appropriate PLC and in the place provided by the wiring diagram.

5.2.2 Pneumatic

Authorized personnel		PPE to wear					
Component status	Installed component						
Power Values	See chapter 2.2						
Necessary preparations	Working pneumatic air system						
Materials needed	\						
Equipment needed	\						



The pneumatic connection is the responsibility of the customer.

It is recommended to connect the pneumatic hose first (or both in the case of double-acting work) and then proceed with the connection of the product hose (using the data given in [chapter 2.2](#)).

5.3 Commissioning

The commissioning of the component is carried out once the positioning and connection of the connections has been completed. Before commissioning the component, the following checks must be carried out:

- Check that the connections have been connected correctly;
- Check that the component is free of dirt or residues of various kinds;



ATTENTION!

If even one of the above points does not comply, commissioning must not be carried out. Commissioning should only be carried out when all points have been successfully completed.

6 SOFTWARE

N.A.

7 PROCEDURE

In this chapter we want to explain the main configurations that can be used on the component covered by this manual. We want to explain in detail:

- How to first boot the component
- How to perform needle adjustment by screw adjustment;

It should be noted that, being a volumetric valve, the output fluid depends only on the adjustment of the needle.

7.1 First start

To perform the first start of the valve, follow these steps:

1. Fill the lubricant supply hose before connecting a metering valve, to remove the air from the hose;
2. Connect the fluid supply hose to the appropriate housing and the air to the respective pneumatic connections;
3. Set the maximum dosage, i.e. loosen the locking screw and turn the micrometer knob until it stops (you should see 100%);
4. If the pressure inside the valve is high and you struggle to turn the knob, it is recommended that you take a dosage while turning the knob. By doing so, the pressure inside the chamber decreases and it is possible to perform the adjustment;
5. To prevent tampering, it is recommended to tighten the locking grub screw.



Maintain the nozzle/application point distance, to increase dosing accuracy;



The cycle time depends on the viscosity of the fluid and the pneumatic pressure of the fluid.

7.2 Micrometric adjustment

In this case, the adjustment knob must be adjusted (see [chapter 2](#), figure 01, number 01), to adjust the amount of fluid dispensed with extreme precision, namely:

- Turn counterclockwise to increase the needle stroke and therefore the amount of fluid dispensed;
- Turn clockwise to decrease the needle stroke and therefore the amount of fluid dispensed. If the valve reaches the end of its stroke, it is not completely closed but delivers the minimum value ([chapter 2.2](#)).



To facilitate the adjustment of the amount of fluid to be dispensed, it is recommended to keep the valve in dosing mode for the entire time of adjustment, so that the needle is towards the nozzle and not towards the adjustment.

8 MAINTENANCE

Maintenance interventions are all those activities that must be performed on the component which, if carried out correctly, allows it to have a longer life. In general, maintenance is divided into two groups:

- **Ordinary maintenance**, which are interventions on a regular basis or that can be carried out by the customer's staff, are the most important activities as they allow the component to be kept in good working condition;

**ATTENTION!**

Ordinary maintenance must be carried out in the manner and timing indicated in the following chapters.

- **Extraordinary maintenance**, i.e. all those interventions that are not regularly carried out or that have not been planned, or interventions that cannot be carried out by the Customer. They can also arise from the lack of routine maintenance.

**ATTENTION!**



Extraordinary maintenance work must be carried out together with the manufacturer's specialized technicians.

Regarding attendance, it must be considered that:

- **When necessary**: Operation to be carried out when the need to be carried out is seen;
- **Every machine start or job end**: Indicates a daily period, in general. This can imply every 24 hours (i.e. at the beginning of the shift of every day, or the end of the shift of every day), or even more frequently, depending on the application;
- **Long pause**: Indicates a period approximately greater than an hour;
- **Each drum change**: Indicates each time the fuel system (tank, drum, cartridge or other) is changed;
- **Each mixer disassembly**: Indicates that each time the mixer is replaced, a certain operation must be performed;
- **Weekly**: Indicates a period equal to seven calendar days;
- **Monthly**: Indicates a period equal to one calendar month;
- **Semi-annual**: Indicates a period equal to six calendar months;
- **Yearly**: Indicates a period equal to one calendar year.

**ATTENTION!**

The times given below are indicative as they depend on how the component is used. Follow the variations suggested by the technicians.

Assigned	Description	Frequency	Chapter
	Perform a test function of the valve	Every machine start-up or end of work	\
	Perform a surface cleaning of the valve	Every machine start-up or end of work	\
	Put a bit of grease on the outlet nozzle	Every end of work	\
	Cleaning and/or replacing the nozzle	Semiannual	8.1, points 2 and 3
	Disassembly and reassembly of the valve	Annual	8.1



ATTENTION!


Apply the grease tip at the end of the work and at every prolonged pause in the system, to preserve the fluid inside the system and the functionality of the valve itself



ATTENTION!

Only use soft brushes or cotton cloths to clean the valve.

8.1 Disassembly and reassembly of the valve

Assigned	Periodicity	Materials and equipment
	Annual	<ul style="list-style-type: none"> • Torque wrench 0.2 to 1.2Nm and 1 to 6 Nm; • 1.5mm, 2mm and 2.5mm hex wrench; • Allen key kit from 1.5 to 10mm; • Special Allen key SW 3.5mm; • Hook kit (for removing gaskets); • Vise with coated magnetic hooks

PPE to wear



DANGER!

Before performing this procedure you must relieve the pressure from the system and disconnect the air connection.

To carry out the disassembly and consequent reassembly of the valve, please refer to the link below as it is a procedure that involves many steps. It is therefore recommended to watch the video:

[Link to video](#)

Here's also how to do with the photos, in case you can't open the video online:



ATTENTION!

When installing the micrometer regulator or clamping screw, pay particular attention that the thread is inserted correctly, i.e. perpendicular to the body, and not that it is inclined.



ATTENTION!

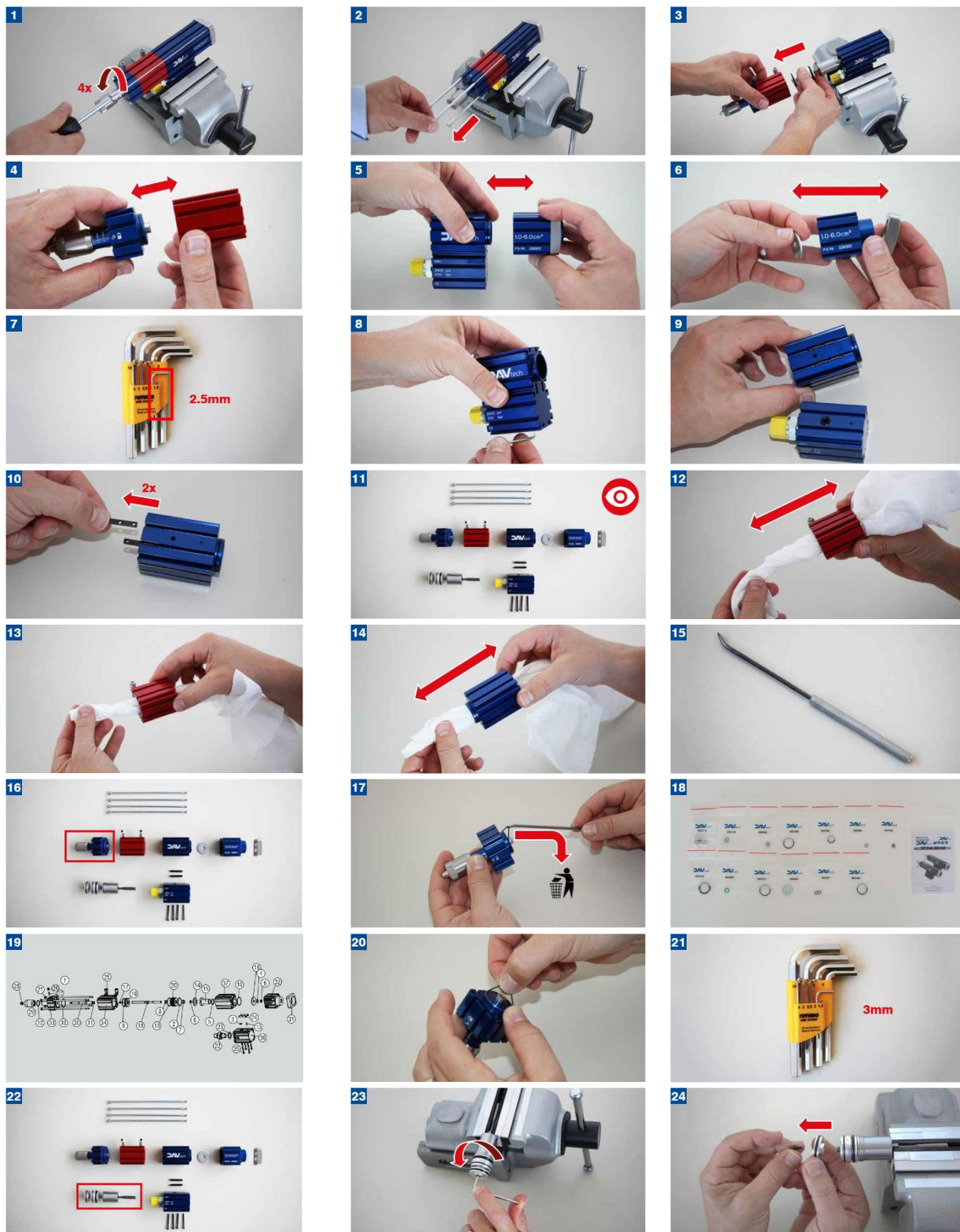
Before screwing the nozzle into place, check that the adjusting screw, or knob, is completely loose to avoid damaging the nozzle and needle. To loosen them, turn counterclockwise until they no longer resist.

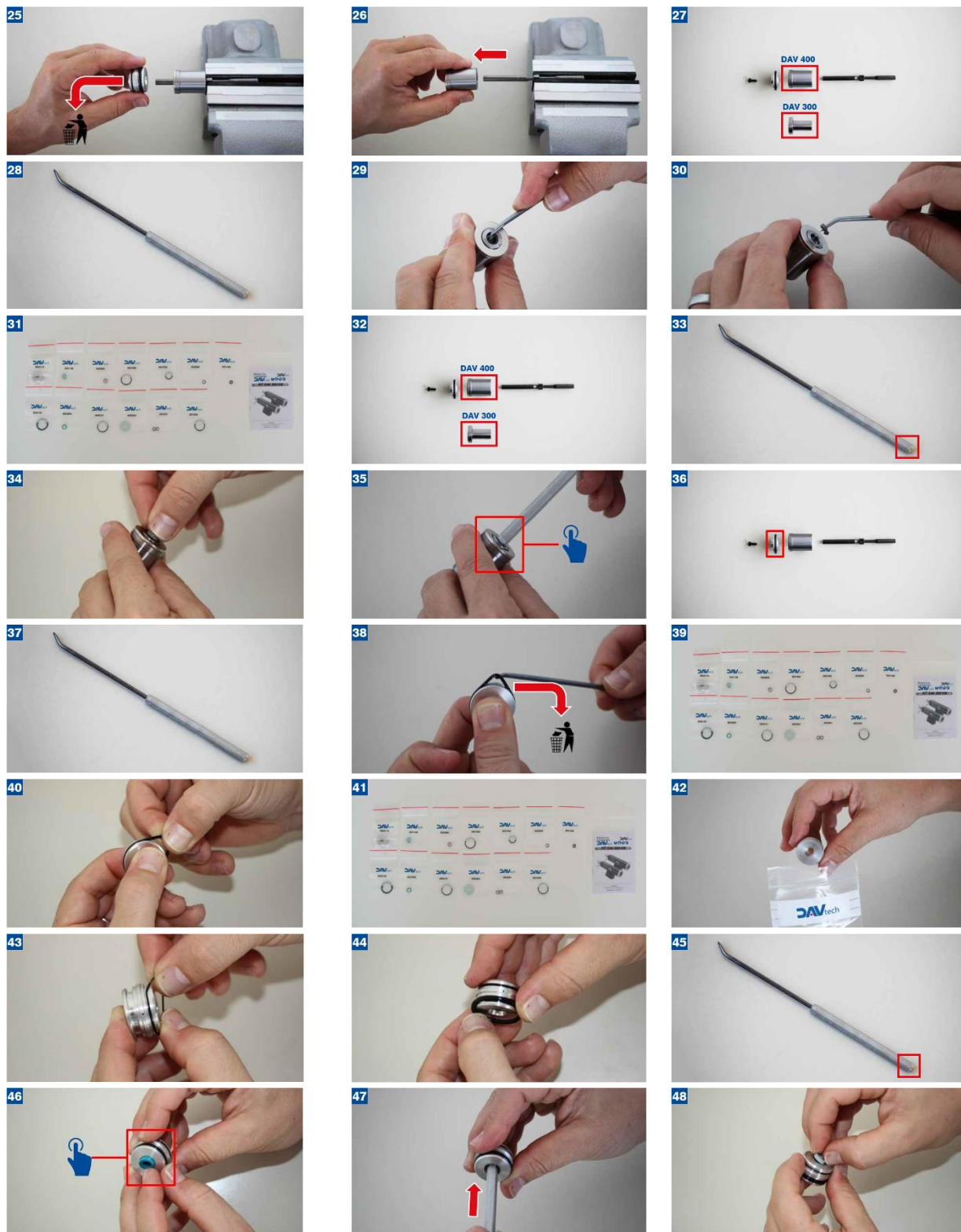


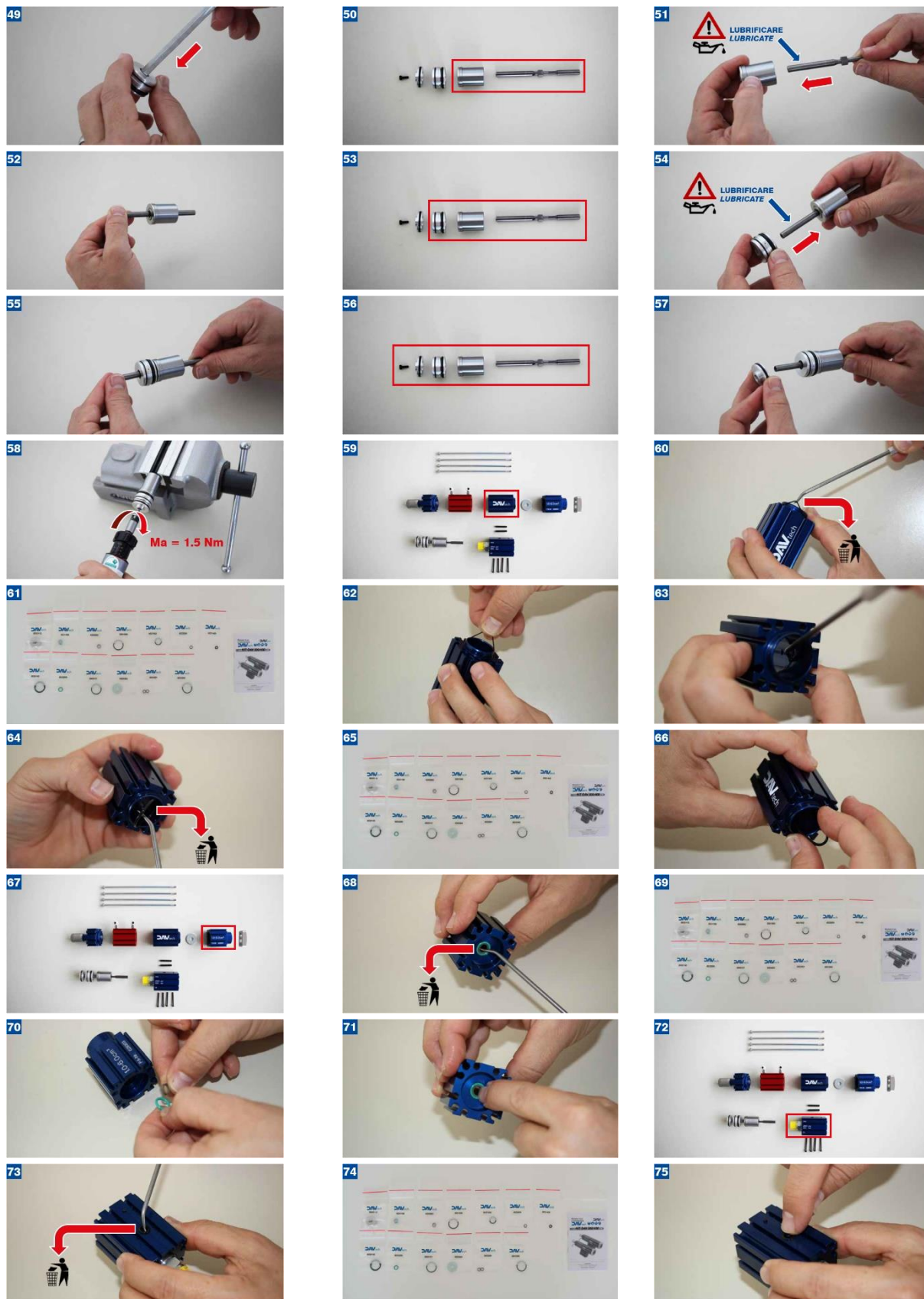
ATTENTION!

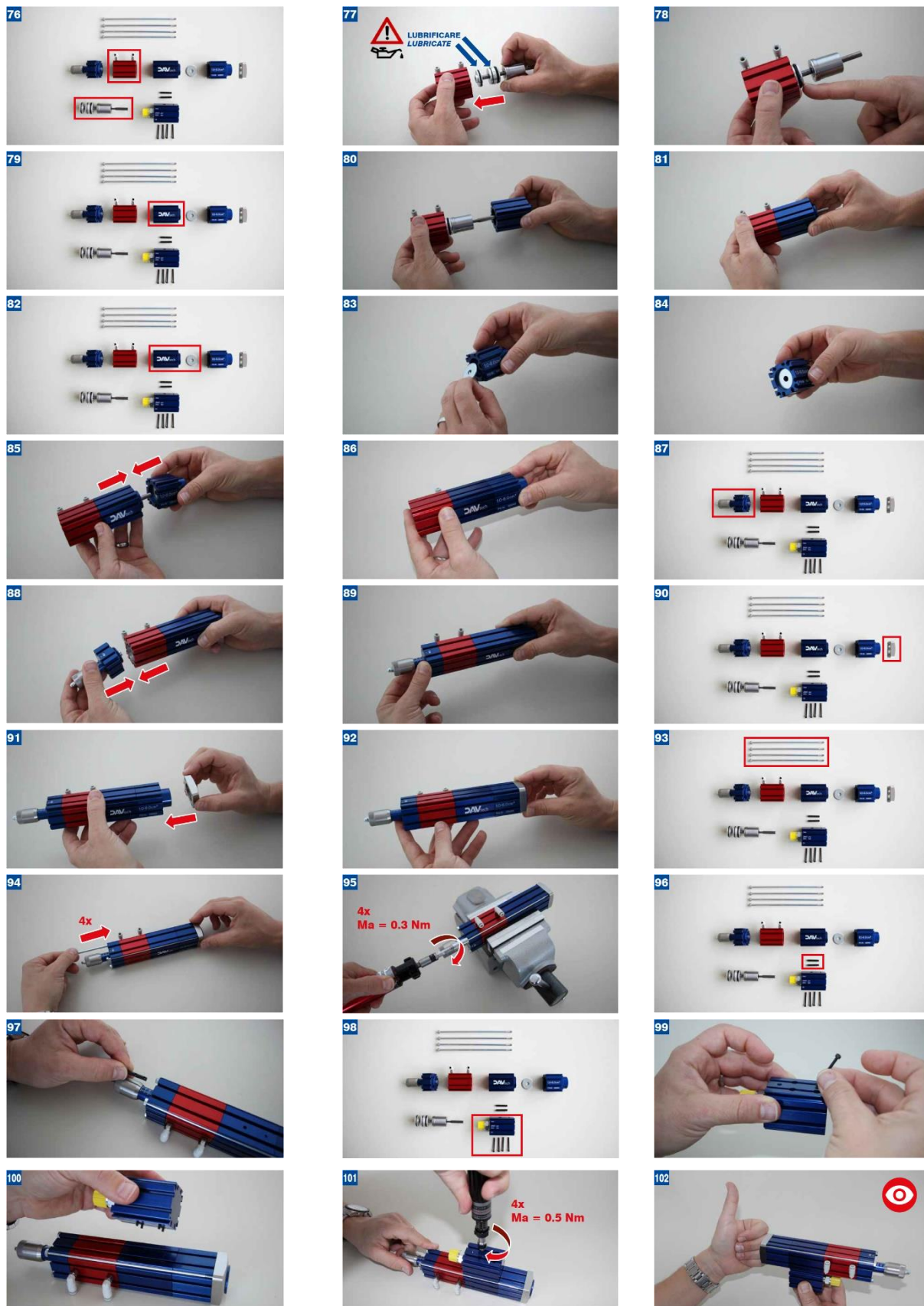
The passages that are present here are the same as those of the normal DAV 300. The concept is the same, except that in this valve there is the gun handle and the hook. To disassemble the two different blocks, follow the steps here and skip the steps that refer to the fluidic block shown in the images.

- Using a screwdriver, remove the screws 08. From here the handle is detached from the valve block and maintenance can be carried out on the valve. To carry out maintenance on the handle, it is advisable to consult the manufacturer, as it is a delicate block and special care must be taken.









9 TROUBLESHOOTING

This chapter deals with the most common problems that may arise when using the component of this manual.



ATTENTION!

Once the operator has found a problem or assumes that there is a problem, they must call the technician in charge of maintenance. Maintenance should always be performed by a specialized and qualified technician.

DEFECT	CAUSE	SOLUTION
No or little fluid	Clogged valve	Remove obstructions
	The valve does not receive the command	Check the valve control (solenoid valve). Perform a manual test
	Fluid pressure is too low or no	Check the pressure of the fluid supply unit and increase it if necessary
	The nozzle is clogged	Unscrew and clean the nozzle
	The filter is dirty (if any)	Wash or replace the filter
	A tube is kinked	Check the condition of the fluid supply hoses
	Insufficient operating pressure	Check the actuation pressure (chap. 2.2)
	Fluid residues present in the system	Disassemble and clean any solid particles
Nozzle drips even if valve is not piloted	Lubricant with too high viscosity	See chapter 2.2 and fluid data sheet
	Dirt in the nozzle	Clean or replace the nozzle
	Damaged scraper	Replace scraper
Valve opens late	Damaged pin	Replace pin
	Insufficient operating pressure	Check the actuation pressure (chap. 2.2)
The valve activates, but the fluid is not expelled	O-Ring on Damaged Air Piston	Replace O-Ring on Pneumatic Piston
Continuous signal from the sensor	The feed pump does not lubricate pump	Observe the operating instructions for the feed pump
	Faulty sensor	Replace sensor
	Too little dosing volume	Check the dosage volume adjustment and increase it if necessary
	Inlet pressure too high	Check the sensor position
No signal from the sensor	Reduce the pressure to the maximum permissible pressure (chap. 2.2)	
	Broken cable	Replace the cable
	Faulty sensor	Replace the sensor
Air in the system	Inlet pressure too low	Increase the pressure to the minimum permissible pressure (chap. 2.2)
	Air bubbles in the lubricant container	Loosen the inlet hose. Vent the system.
Non-hermetic valve	Air bubbles in the pipes	Reassemble the inlet hose.
	Defective or damaged seal	Replace the gasket
Irregular dosage	Control air applied too early	Switching can only take place if no more material is ejected

10 END OF LIFE

End-of-life refers to all those activities that put the component out of service. End-of-life activities can be:

- **Storage**, i.e. when the component is placed inside the warehouse for an unspecified period waiting for a third party to buy the component;
- **Dismantling**, i.e. when the component has reached the end of work period, whether it is due to age, obsolescence or faults that cannot be repaired, or that it is possible to repair but it is worth buying a new component.

If installation is not planned soon, the component can remain packaged and must be stored in a sheltered and preferably closed place. The ambient temperatures to be observed are given in [chapter 2.2](#).

On the other hand, for the dismantling and consequent scrapping of the component or its parts, the different nature of the various components must be considered, and a differentiated scrapping must be carried out. We recommend that you commission specialist companies for this purpose and must always observe the applicable laws on waste disposal.