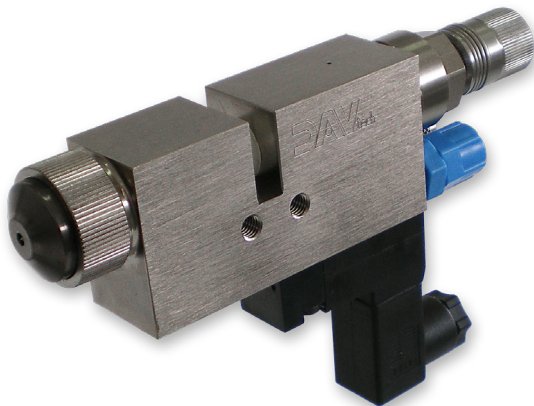


Installation and maintenance guide

DAVtech

SPRAY VALVE DAS 100 EV



DAV TECH SRL

Via Ravizza, 30 - 36075 Montecchio Maggiore (VI) - ITALY
Tel. 0039 0444 574510 - Fax 0039 0444 574324

davtech@davtech.it - www.davtech.it

Index

1 INTRODUCTION	pag. 3
1.1 The manual	
1.2 Warranty	
1.3 Goods receiving	
2 TECHNICAL DESCRIPTION	pag. 3
2.1 Valve operation	
2.2 Technical specifications	
2.3 Connection diagram	
3 INSTALLATION	pag. 4
3.1 Mounting in the machine	
3.2 Drive the valve	
3.3 Fluid connection	
3.4 Setting of the dispensed shot	
3.5 Amount of the shot	
4 MAINTENANCE	pag. 5
4.1 General rules	
4.2 Valve Disassembly and Re-assembly	
5 TROUBLESHOOTING	pag. 6
5.1 Problems and solutions	
5.2 Spray setting	
6 SPARE PARTS AND DIMENSIONS	pag. 7
6.1 Overall dimensions	
6.2 Spare parts DAV 100 EV	
6.3 Spare parts list DAV 100 EV	

1 INTRODUCTION

1.1 The manual

The user guide is the document that accompanies the valve from the time of its construction and throughout the period of use, it is therefore an integral part of the valve. It requires reading the manual before taking any action involving the valve. The manual must be readily available for use by staff and maintenance of the valve. The user and the attendant use are required to know the contents of this manual.

Reproduction of any part of this manual, in any form, without the express written permission of DAV Tech. The text and illustrations in this manual are not binding, the DAV tech reserves the right, at any time and without notice, the right to make any changes to improve the product or for reasons of character manufacturing or commercial.

1.2 Warranty

The warranty is valid for a period of 12 months from the date of commissioning and no later than 15 months from the date delivery. The interventions carried out during the warranty period does not extend in any way the validity period of the guarantee. The seller is not liable for defects caused by normal wear of parts which by their nature are subject to wear.

1.3 Goods receiving

The original configuration of the valve must never be changed.

Upon receipt of the goods, check that:

- The packaging is intact
- The exact correspondence of the material ordered.

2 TECHNICAL DESCRIPTION

2.1 Valve Operation

The DAS 100 EV spray valve has been designed and built to be used in various applications. Its design and its versatility make it suitable for any application requiring the use of spraying valves. The DAS 100 EV valve is a low and medium viscosity fluid dispenser.

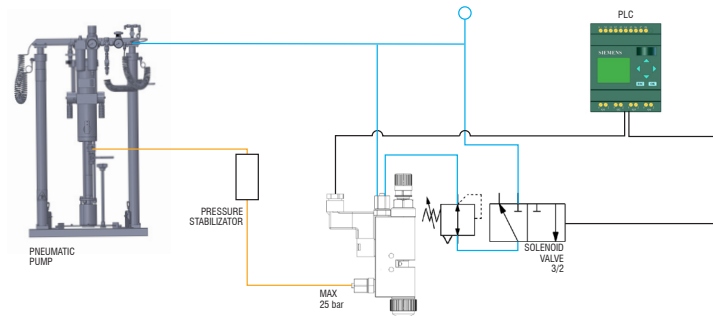
Sturdy and compact, it has the particularity of having nozzle and cap covered in anti-stick material.

With appropriate gaskets it can be used for spraying solvent or acetate based adhesives.

2.2 Technical Specification

Model	DAS 100 EV
Operation	Single Acting - Double Acting
Weight	490 g
Max fluid pressure	Max 25 bar
Actuating air pressure	5 - 7 bar
Atomizing air pressure	0,1 - 6 bar
Type air inlet	Hose 6x4mm 4x2, 5mm
Fluid inlet thread	1/8 gas
Air cap type	Oval or round
Speed	Up to 200 cycles / min
Adjusting of the passage	Micrometric
Used materials	Stainless steel, nickel-plated brass
Fluids to be dispensed	Grease, oil, lubricants, primers, vinilic glues

2.3 Connection diagram

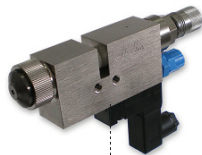


3 INSTALLATION

3.1 Mounting in the machine

The DAS 100 EV valve must be mounted using the fixing threaded holes on the valve.

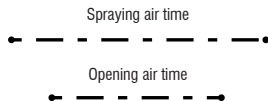
A good valve fixing on the machine must be guaranteed, stable without vibration and with good accessibility for adjustment, cleaning and maintenance.



Fastening hole

3.2 Drive the valve

The DAS 100 EV spray valve must be operated by two separate solenoid valves; a 3/2 way for the driving (mounted on the valve) and a 3/2 way (external) for the atomizing. The operating pressure must be between 5 and 7 bar. The atomizing between 0,1...2.5 bar. The atomizing air must be activated before and closed after the operating air, this to prevent the fluid remaining on the nozzle and on the cap.



3.3 Fluid connections

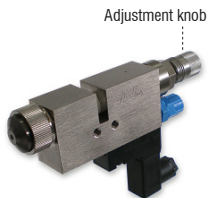
The valve must be connected to a fluid supply unit (pressure drum, diaphragm pump, pressure tank). The attack of the material for the tube is threaded 1/8 gas f.

3.4 Setting of the dispensed shot

Adjusting the needle stroke determines the amount of fluid dispensed.

> Micrometric adjustment version:

To adjust the travel, act on the adjustment knob at the top of the valve. Turn clockwise to decrease spike stroke and consequently the amount of product. Turning clockwise, reaching the end of the stroke the valve will be fully closed, so it will not flow fluid. Rotate counterclockwise to increase the stroke stroke and then the amount of fluid.



Do not tighten the needle setting too firmly to avoid damaging the nozzle and needle.

3.5 Setting of the material quantity

Adjusting the amount of material is determined by:

- > **Nozzle diameter (0.3 - 0.5 - 0.8 - 1.0 - 1.5)**
- > **Fluid pressure**
- > **Adjustment of the needle stroke**
- > **Opening time**

Acting on these factors, you can adjust the amount of material you want.

4 MAINTENANCE

4.1 General rules

The DAS 100 EV spray valve, thanks to the construction methods and the materials used, are easy to maintain. Minimal, simple, accurate, and constant maintenance allow for long-lasting and smooth operation in valve time, while maintaining performance unchanged.

4.2 Valve Disassembly and re-assembly

Before disassembling the valve:

- 1) Wash the valve with water
- 2) Drain the pressure from the system
- 3) Remove the solenoid valve from the dosing body
- 4) Unscrew the adjustment block (Pos.17a - 17b) with a 17 mm wrench. Take care because the spring is pushing.
- 5) Unscrew the ring nut (Pos.3) and remove the air cap (Pos.1a - 1b)(fig.1)
- 6) Unscrew the nozzle (Pos.2) with a 6 mm wrench (fig. 2)
- 7) Remove the spring (Pos.15)
- 8) Carefully remove the fixing plate (Pos.16) complete with pipe holder and pipes (fig. 3)
- 9) With a narrow nose pliers pull off the needle (Pos.9)(fig. 4)
- 10) Unscrew the compass (Pos.7) with a 12 mm socket wrench and remove it from the body (fig. 5)
- 11) If necessary, remove the needle (Pos.9)

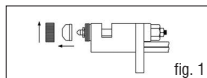


fig. 1

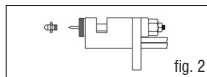


fig. 2

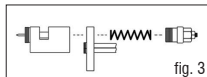


fig. 3

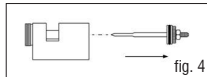


fig. 4

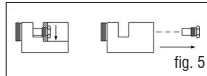


fig. 5

Installation and maintenance guide

After having cleaned it thoroughly and replaced all the damaged parts (above all the seals and the scraper mounted under the compass). Reassemble in the reverse order of disassembly by lightly lubricating the parts and gaskets with mounting grease.

5 TROUBLESHOOTING

5.1 Problems and solutions

The search for defects in the operation should be performed only by personnel qualified respecting the safety rules in force.

PROBLEM	POSSIBLE CAUSE	SOLUTION
Nothing or little fluid	Valve does not receive the command	Check valve (solenoid valve) control. Perform a manual test.
	The pressure of the fluid is too low or absent.	Check the fluid supply pressure and, if necessary, increase it.
	The nozzle is clogged	Unscrew and clean the nozzle.
	The filter is dirty (if present)	Wash or replace the filter.
	A tube is bent	Check the status of the fluid supply pipes
	Insufficient drive pressure	Check drive pressure (5...7 bar)
	Fluid residues present in the system	Clean the system with water
Fluid out of the compass	O-ring or shaped gasket on the damaged valve body	Replace O-ring or shaped gasket
Fluid flow between valve body and fixing plate	O-ring on the damaged dam reservoir	Replace the O-ring of the hub
The nozzle dries even if the valve is not piloted	Presence of dirt in the nozzle	Clean or replace the nozzle.
The valve opens late	Insufficient drive pressure	Check drive pressure (5...7 bar)
	O-ring on the damaged spike	Replace the O-ring on the needle
Splashed irregularly	Insufficient spraying pressure	Check spraying pressure (0,1...2,5 bar)
	Dirt in the air cap	Clean the air cap

5.2 Spray setting

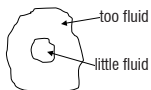
Dirty air cap: fluid flows from the nozzle

- > Clean the air cap and the nozzle
- > Decrease the atomizing air

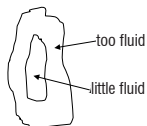
Too fluid

- > Decrease the fluid pressure

Round cap



Oval cap



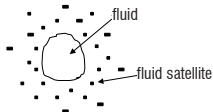
Irregular application: Insufficient misting air

- > Increase the atomizing air pressure

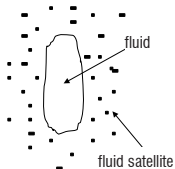
Poor amount of fluid

- > Increase the fluid pressure

Round cap

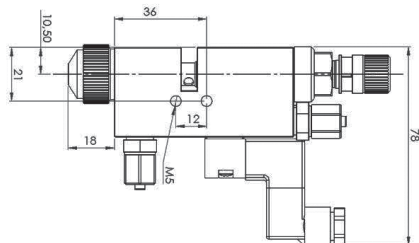
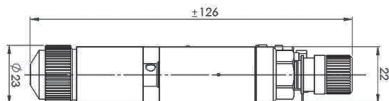
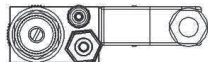


Oval cap



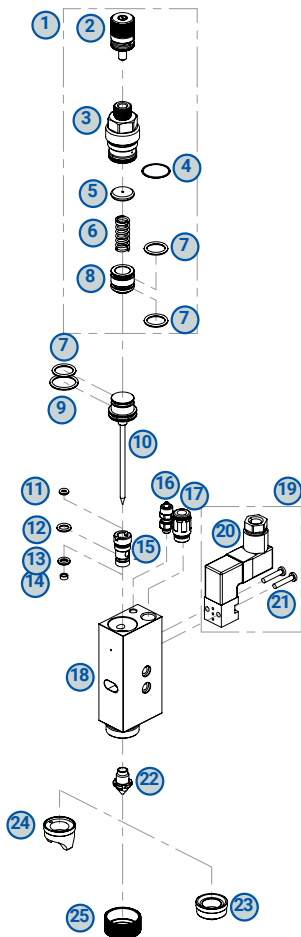
6 SPARE PARTS AND DIMENSIONS

6.1 Overall dimensions



Installation and maintenance guide

6.2 Spare parts DAS 100 EV



6.3 Spare parts list DAS 100 EV

Ref.	Description		Code
1	MICROMETRIC REGULATION COMPLETE		0003.34000001
2	MICROMETRIC REGULATION TRIGGER		0003.34000004
3	MICROMETRIC REGULATION BLOCK		0003.34000002
4	O-RING		0003.150X10E
5	REGULATION WASHER		0003.83100108
6	PRESSURE SPRING		0003.000400
7	O-RING		0003.000013E
8	REGULATION PISTON		0003.83100109
9	O-RING		0003.000015E
10	NEEDLE		
	NEEDLE 0,3 MM	10.1	0003.84130303
	NEEDLE 0,5 MM	10.2	0003.84130305
	NEEDLE 0,8 MM	10.3	0003.84130308
	NEEDLE 1,0 MM	10.4	0003.84130310
	NEEDLE 1,5 MM	10.5	0003.84130315
11	O-RING		0003.000006E
12	O-RING		0003.000010E
13	O-RING		0003.000008E
14	VARISEAL		0003.30790T
15	BUSH		0003.83100104
16	COMMAND AIR FITTING		0003.RRAB0252
17	ATOMIZATION AIR FITTING		0003.RRBZ1052
18	BODY VALVE		0003.34400000
19	SOLENOID VALVE COMPLETE 24VDC		0003.000321
20	SOLENOID VALVE CONNECTOR		0003.200F01
21	SOLENOID VALVE SCREW		0003.11030161
22	NOZZLE		
	NOZZLE 0,3 MM	22.1	0003.85722103
	NOZZLE 0,5 MM	22.2	0003.85722105
	NOZZLE 0,8 MM	22.3	0003.85722108
	NOZZLE 1,0 MM	22.4	0003.85722110
	NOZZLE 1,5 MM	22.5	0003.85722115
23	ROUND CAP AIR 0,3-1,0	23.1	0003.85792110
	ROUND CAP AIR 1,5	23.2	0003.95792115
24	FLAT CAP AIR 0,3-1,0	24.1	0003.85792210
	FLAT CAP AIR 1,5	24.2	0003.85792215
25	COLLAR		0003.85792001
	GASKET KIT COMPLETE		GASKETKIT-DAS100EV

DAV TECH SRL Via Ravizza, 30 - 36075 Montecchio Maggiore (VI) - ITALY - Tel. 0039 0444 574510 - Fax 0039 0444 574324

davtech@davtech.it - www.davtech.it

We reserve the right to modify at any time, without notice, the specifications, dimensions and weights in this manual.
The illustrations are not binding.