

## PRESSURIZED TANKS PT

The PT pressurized tanks are designed to feed with a constant, reliable and adjustable pressure low and medium viscosity fluids such as: oils, anaerobic and cyanoacrylic glues, 000-00-0 NLGI greases, self leveling resins etc.

The tanks are available in 3 sizes: 2 liters, 5 liters, 10 liters and 16 liters and could be equipped with low level sensor.

DAV Tech tanks comply the PED rules regarding pressurized pots and are CE marked.



### DAV TECH SRL

Via Ravizza, 30  
36075 Montecchio Maggiore (VI) - ITALY  
Tel. 0039 0444 574510  
Fax 0039 0444 574324

[davtech@davtech.it](mailto:davtech@davtech.it)  
[www.davtech.it](http://www.davtech.it)

### FIELDS OF APPLICATION:

- > Feeding of low to medium viscosity fluids.

### FEATURES:

- > 3 mm thickness stainless steel pot
- > 15 mm Aluminium cap, sandblasted and painted
- > The pot's stainless steel is mirror polished outside and polished inside
- > Safety over-pressure valve, setted and certified at 5 bar
- > SMC pressure adjuster with gauge
- > Possibility to check the low level of the fluid

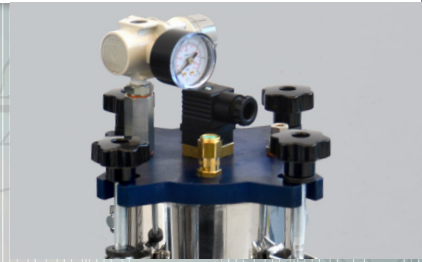
### Technical specifications

Features	PT2.0	PT5.0	PT10.0	PT16.0
Size	2 lt	5 lt	10 lt	16 lt
Weight	3 Kg	5 Kg	7 Kg	12 kg
Internal diameter	122 mm	162 mm	197 mm	247 mm
Internal height	185 mm	235 mm	285 mm	355 mm
Overall dimensions (max)	h. 300 mm, Ø 210 mm	h. 370 mm, Ø 270 mm	h. 415 mm, Ø 310 mm	h. 495 mm, Ø 365 mm
Thickness of the pot	3 mm			
Thickness of the cap	15 mm			
Max feeding pressure	5 bar, the exceeding pressure is automatically discharged from the safety valve			3 bar
Used material	Stainless steel, anodized aluminum			
Low level monitoring	Optional			
Other versions	Version for anaerobic fluids			
Special versions	Upon request is possible to equip the tanks with stirrer, heating system, and other options			

## LOW LEVEL MONITORING

Using the low level sensor ( optional) is possible to receive an electric signal when the tank level is under the 20-30%.

On the tanks PT5.0, PT10.0 and PT16.0 is also possible to mount 2 level signals, one for a first warning and the second for the alarm.

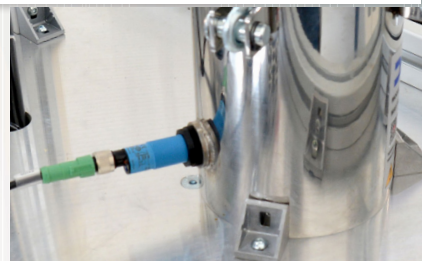


## FLUID FEEDING HOSE

To avoid having to create rigid intakes, often incompatible with many glues, was chosen to use a special fitting, which allows to ensure that the tube (8x6 or 6x4 mm) used to feed the output fluid may be introduced to the bottom of the tank before being tightened in position.

## PT2.0 FOR ANAEROBIC FLUIDS

The anaerobic adhesives of the best known companies are almost always supplied in oval tins with capacity of 250 cc. The transfer of these cans involves the risk of soiling the work area, in addition to the loss of part of the product. The tank PT2.0 exists in a special version that allows you to enter directly into the reservoir jar glue, while a collar on the lid means that the same remains stationary in position even if the tank is bent.



## POLISHING OF SURFACES

In the design and construction of tanks Tech DAV has been paid great attention to the quality aesthetic finishes, as well as to their functionality. It is therefore chosen to polish the outer surface of the stainless steel jar while the lid, in aluminum, is processed by CNC and then anodized to make it resistant and easy to clean.

## ITALIAN QUALITY 100%

All the components and construction of the tank come from Italian suppliers and this enables us, especially for most delicate parts such as safety valves, to offer our clients a tank robust, durable and above all safe.



SCAN THIS CODE  
TO SEE TUTORIAL  
ONLINE