

# Installation and maintenance guide



## VOLUMETRIC PUMPS PCP

005 / 015 / 050 / 150 / 500 / 1000



**DAV TECH SRL**

Via Ravizza, 30 - 36075 Montecchio Maggiore (VI) - ITALY

Tel. 0039 0444 574510 - Fax 0039 0444 574324

**davtech@davtech.it - [www.davtech.it](http://www.davtech.it)**

### Index

<b>1 INTRODUCTION</b>	pag. 3
1.1 The manual	
1.2 Warranty	
1.3 Goods receiving	
<b>2 TECHNICAL DESCRIPTION</b>	pag. 3
2.1 Pumps operation	
2.2 Technical specifications	
<b>3 GETTING STARTED</b>	pag. 4
3.1 Pump 005/ 015 / 050 / 150 / 500 / 1000 composition	
3.2 Notes before use	
3.3 Connection A (stator) B (rotor)	
3.4 Eliminating bubbles before dispensing the fluid	
<b>4 TYPICAL SETUP</b>	pag. 6
<b>5 PUMP MAINTENANCE</b>	pag. 8
<b>6 TROUBLESHOOTING</b>	pag. 10
<b>7 SYSTEM PRINCIPLES</b>	pag. 11
<b>8 BREAKDOWNS</b>	pag. 12
8.1 Breakdown Pump 005	
8.2 Breakdown Pump 015	
8.3 Breakdown Pump 050	
8.4 Breakdown Pump 150	
8.5 Breakdown Pump 500	
8.6 Breakdown Pump 1000	

## 1 INTRODUCTION

### 1.1 The manual

The user guide is the document that accompanies the pumps from the time of its construction and throughout the period of use, it is therefore an integral part of the pump. It requires reading the manual before taking any action involving the pump. The manual must be readily available for use by staff and maintenance of the pump. The user and the attendant use are required to know the contents of this manual.

Reproduction of any part of this manual, in any form, without the express written permission of DAV Tech. The text and illustrations in this manual are not binding, the DAV Tech reserves the right, at any time and without notice, the right to make any changes to improve the product or for reasons of character manufacturing or commercial.

### 1.2 Warranty

The warranty is valid for a period of 12 months from the date of commissioning and no later than 15 months from the date delivery. The interventions carried out during the warranty period does not extend in any way the validity period of the guarantee. The seller is not liable for defects caused by normal wear of parts which by their nature are subject to wear.

### 1.3 Goods receiving

The original configuration of the pump must never be changed. Upon receipt of the goods, check that:

- The packaging is intact
- The exact correspondence of the material ordered.

## 2 TECHNICAL DESCRIPTION

### 2.1 Pumps operation

The PCP volumetric pumps is the state of art in the micro-dispensing world. The pumps are driven by a gearmotor with encoder and allow volumetric dispensing in strips, drops, or fill a determined volume with the highest accuracy, without be affected from inlet fluid pressure, viscosity and temperature of the media etc. The motor, driven in one direction dispense the fluid, and if driven in the other direction suck back the fluid, preventing dripping and levelling the pressure on the nozzle.

### 2.2 Technical specification

upon request

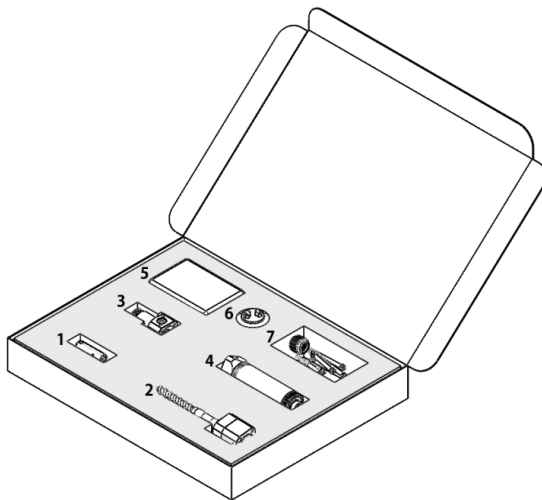
Item	PCP-005	PCP-015	PCP-050	PCP-150	PCP-500	PCP-1000	PCP-2000
Dimensions	27xL230xØ27mm	27xL230xØ27mm	27xL230xØ27mm	29xL280xØ29mm	29xL280xØ29mm	29xL312xØ29mm	60xL580xØ60mm
Weight	360 g	360 g	374 g	532 g	530 g	700 g	3,5 kg
Input pressure	0~6 bar	0~6 bar	0~6 bar	0~6 bar	0~6 bar	0~6 bar	0~6 bar
Max. Dispensing pressure	20 bar	20 bar	20 bar	20 bar	15 bar	20 bar	20 bar
Viscosity	0~1.000.000 mPa.s	0~1.000.000 mPa.s	0~1.000.000 mPa.s	0~1.000.000 mPa.s	0~1.000.000 mPa.s	0~1.000.000 mPa.s	0~1.000.000 mPa.s
Dispensing Volume/Rev.	≈0.0049 ml	≈0.017 ml	≈0.049 ml	≈0.17 ml	≈0.45 ml	≈1.1 ml	≈2.0 ml
Motor Speed (rpm)	1~120 rpm	1~120 rpm	1~120 rpm	1~120 rpm	1~120 rpm	1~120 rpm	1~150 rpm
Dispensing Flow Rate (Max) <sup>1</sup>	≈0.6 ml/min	≈1.8 ml/min	≈6.0 ml/min	≈18 ml/min	≈60 ml/min	≈120 ml/min	≈280 ml/min
Accuracy of dispensing	±1%	±1%	±1%	±1%	±1%	±1%	±1%
Stator Material	FFKM	FFKM	FFKM	FFKM	FFKM	FFKM	FFKM
Material Inlet Port <sup>2</sup>	G 1/4" <sup>2</sup>	G 1/4" <sup>2</sup>	G 1/4" <sup>2</sup>	G 1/4" <sup>2</sup>	G 1/4" <sup>2</sup>	G 1/4" <sup>2</sup>	G 3/8" <sup>2</sup>
Material Outlet Port <sup>3</sup>	Luer Lock <sup>3</sup>	Luer Lock <sup>3</sup>	Luer Lock <sup>3</sup>	Luer Lock <sup>3</sup>	Luer Lock <sup>3</sup>	Luer Lock <sup>3</sup>	G 3/8"
Wetted Parts Material <sup>4</sup>	AISI 304 / AL / UHMW - PE / FKM <sup>4</sup>	AISI 304 / AL / UHMW - PE / FKM <sup>4</sup>	AISI 304 / AL / UHMW - PE / FKM <sup>4</sup>	AISI 304 / AL / UHMW - PE / FKM <sup>4</sup>	AISI 304 / AL / UHMW - PE / FKM <sup>4</sup>	AISI 304 / AL / UHMW - PE / FKM <sup>4</sup>	AISI 304 / AL / UHMW - PE / FKM <sup>4</sup>
Operating Condition	10~40°C	10~40°C	10~40°C	10~40°C	10~40°C	10~40°C	10~40°C

1. Depending on the dispensed fluid - 2. Different inlet, as syringe or cartridge fittings available upon request - 3. Different outlet possible upon request - 4. Different materials possible upon request.

### 3 GETTING STARTED

#### 3.1 Pump 005/ 015 / 050 / 150 / 500 / 1000 composition

- 1 : Stator
- 2 : Rotor assembly
- 3 : Chamber
- 4 : Motor assembly
- 5 : Box
- 6 : Installation tool
- 7 : Screws, Compass



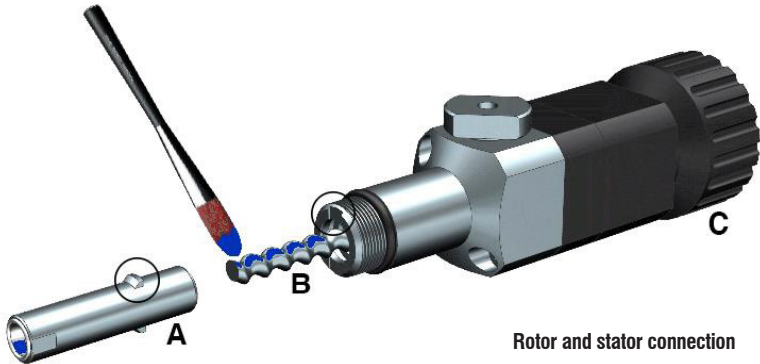
#### 3.2 Notes before use

- > Use the accessories specified by DAV Tech. For the choice of nozzles, evaluate according to the quantity to be dispensed and the desired application result.
- > Keep the pump, its components and accessories clean and protect them from dust or contamination.
- > Replace consumable materials such as syringes and nozzles at every use and clean contaminated parts such as rotor and stator.
- > The digital transducer of the air pressure regulator gives stable results after about 20 minutes from the start.

### 3.3 Connection A (stator) and B (rotor)

If the pump has been delivered disassembled, follow the instructions below for assembly. Use C (fixed tool) to hold the rotor in place and apply the fluid that will be dispensed into A (stator) and B (rotor). Alternatively, in case there are no contamination problems, it is possible to use vaselline oil and common grease.

Engage A (stator) on B (rotor) and then turn them clockwise (using tool C) until the tabs shown in the drawing do not match the seats indicated in the chamber.



**Do not activate the pump without applying the material to the stator. If so, even for a short duration of time, there might be a damage on the stator.**

### 3.4 Eliminating bubbles before dispensing the fluid

When the pump and the controller's settings are finished, before applying pressure to the fluid, rotate the D part (Vent Knob) as the arrow direction one to two rounds to discharge the air bubbles and some fluid. (about 5~10 seconds). When the fluid flows out freely from the vent valve, close it and carefully clean the area.



**When eliminating air bubbles, set the motor speed at "low" (5~10RPM) to discharge.**

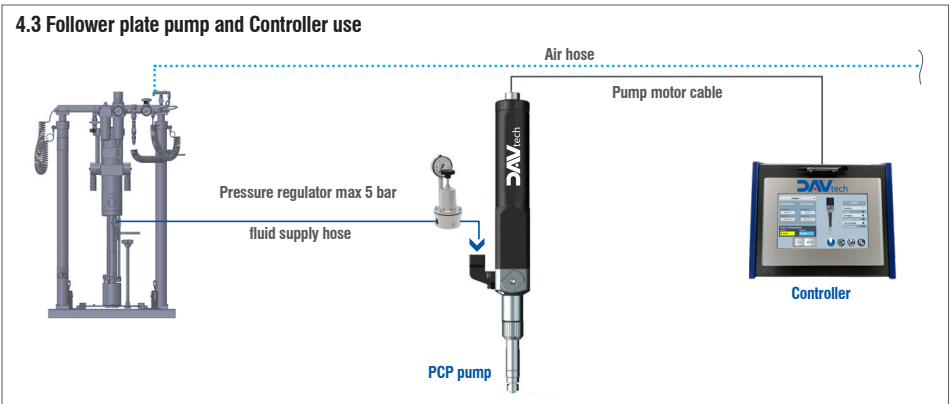
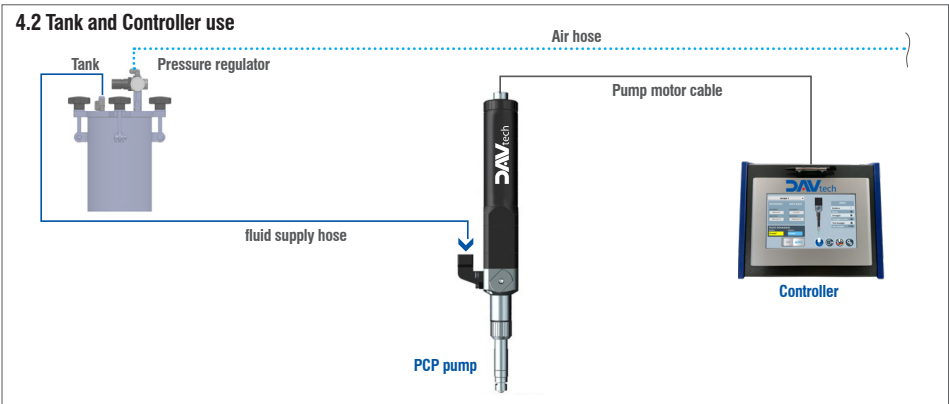
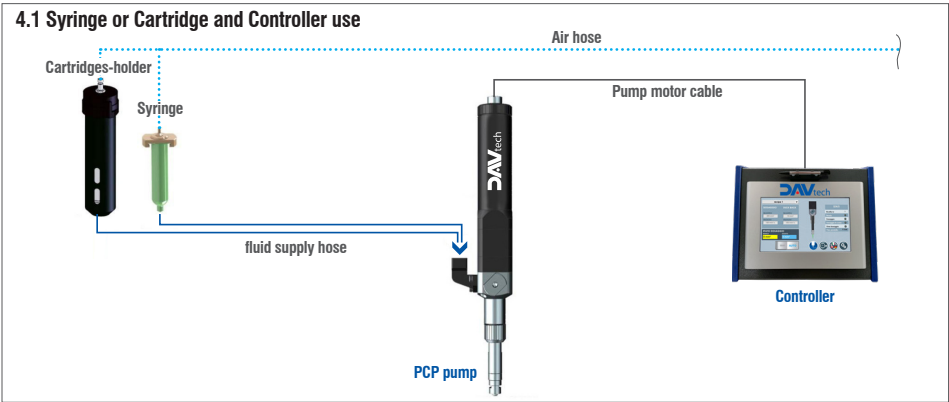


Eliminating  
air bubbles

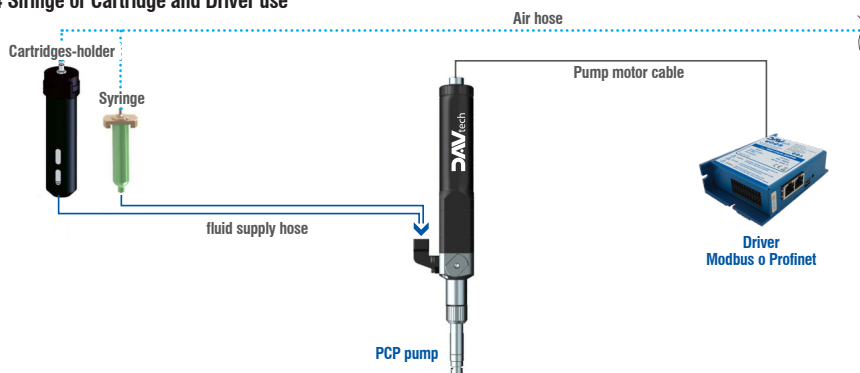
# Installation and maintenance guide

## 4 TYPICAL SETUP

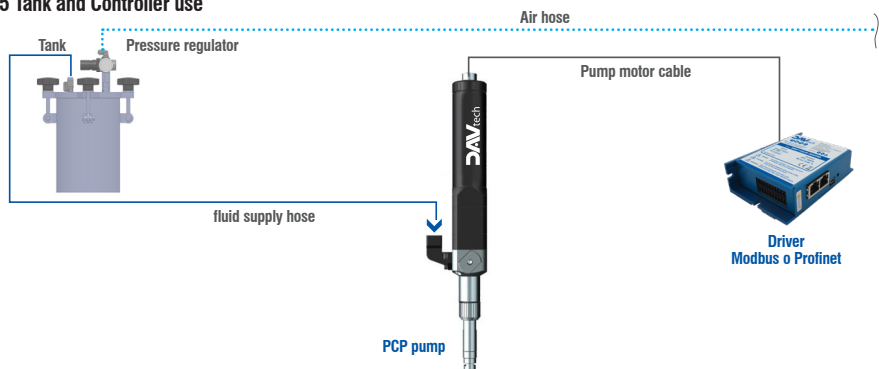
For the proper use of the pump, use the following setting methods to setup.



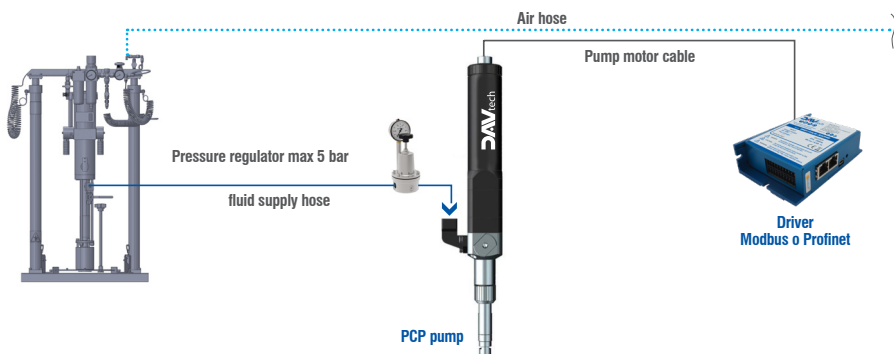
#### 4.4 Siringe or Cartridge and Driver use



#### 4.5 Tank and Controller use



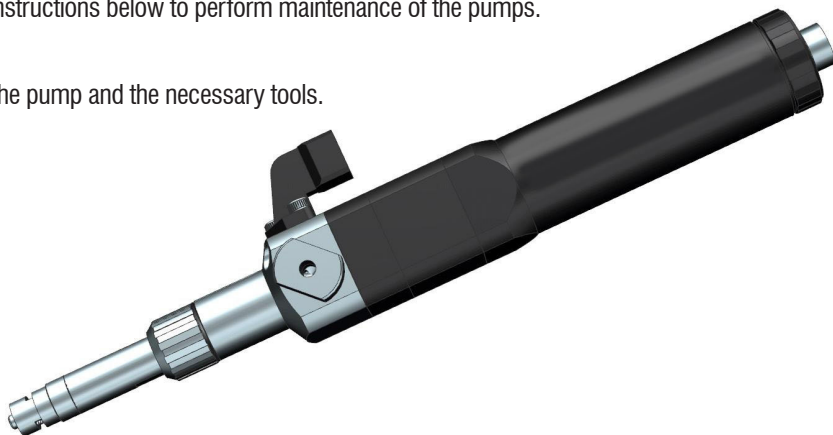
#### 4.6 Follower plate pump and Driver use



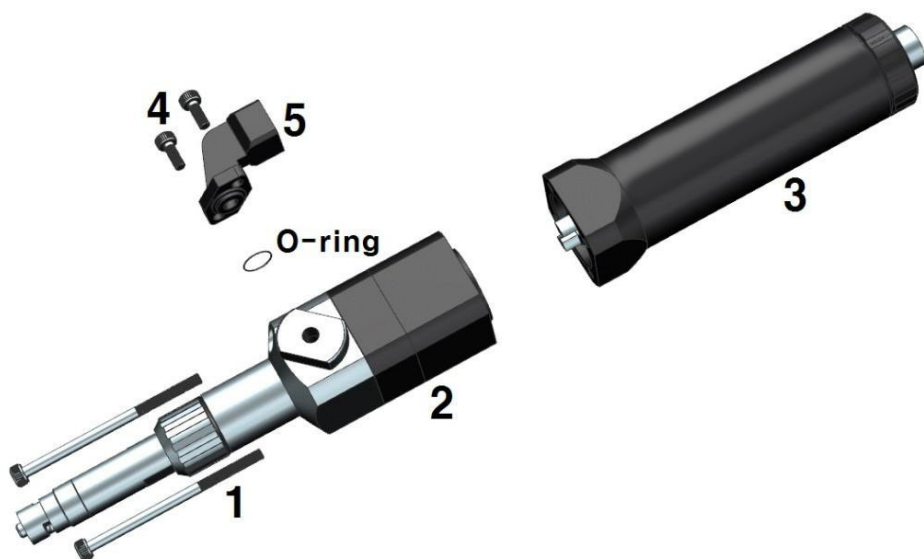
### 5 PUMP MAINTENANCE

Follow the instructions below to perform maintenance of the pumps.

A. Prepare the pump and the necessary tools.

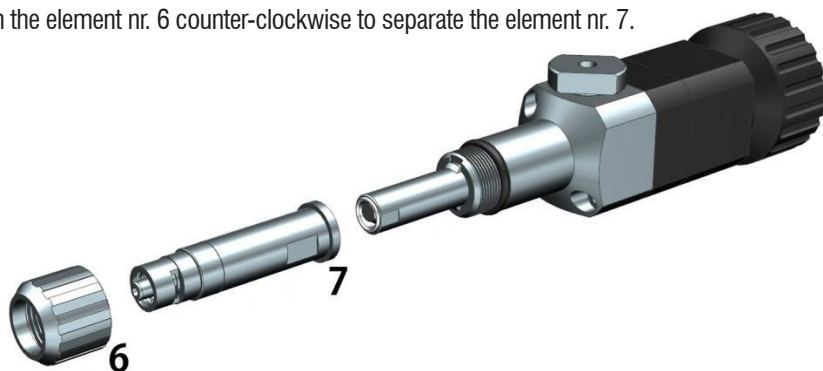


B. Turn the screws nr. 1 and unplug it to separate the elements 2 and 3, then unscrew the screws n. 4 (if present) to separate the element nr. 5 and the O-ring (if present).

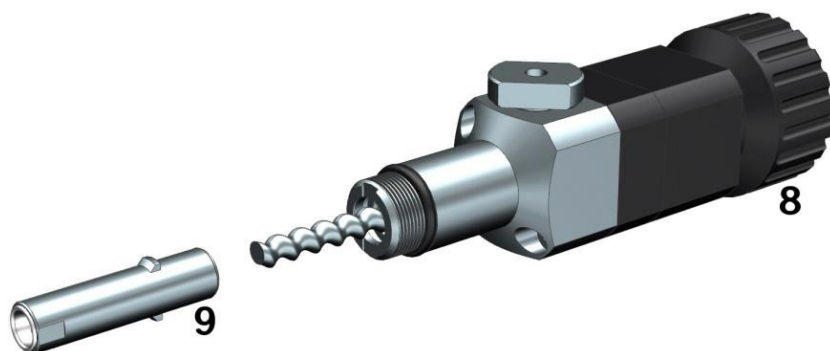




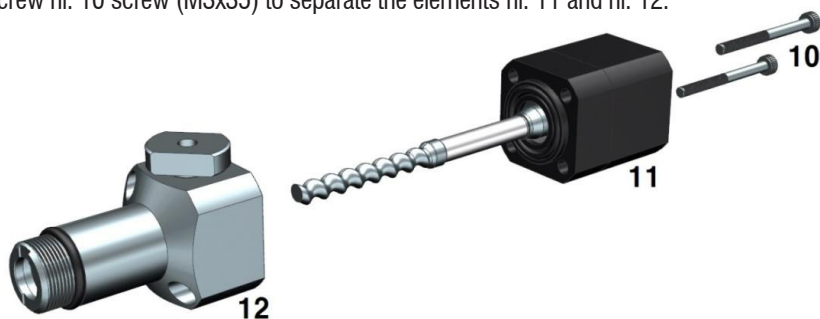
C. Turn the element nr. 6 counter-clockwise to separate the element nr. 7.



Using the fixed tool (supplied) nr. 8, in the motor joint, rotate and separate the stator nr. 9.



E. Unscrew nr. 10 screw (M3x35) to separate the elements nr. 11 and nr. 12.



6 TROUBLESHOOTING GUIDE

PUMP TROUBLE	POSSIBLE CAUSE AND CORRECTION
Fail dispense	<div>1) Check the fluid supply.</div> <div>2) Check the electrical supply of the controller.</div> <div>3) Check if there is fluid.</div> <div>4) Check if the circuit is full of fluid.</div> <div>5) Check that the nozzle is not clogged.</div> <div>6) Check the pump motor rotate freely</div>
The quantity dispensed is not regular	<div>1) Check to see if there was a change in the controller values setting.</div> <div>2) Check if the fluid has hardened inside the pump chamber.</div> <div>3) Check to see if the nozzle is clogged.</div> <div>4) Check that there are no bubbles in the fluid conduit and inside the pump chamber.</div> <div>5) Check that the fluid supply pressure is sufficient to keep filled the chamber of the volumetric pump.</div> <div>6) Check to see if there is a leak in the fitting of the fluid connection.</div>
The fluid continues to exit from the nozzle at the end of the dispensation	<div>1) Check if the stator is damaged.</div> <div>2) Check that there are no air bubbles inside the fluid.</div> <div>3) Check that there are no air bubbles in the pump.</div> <div>4) Verify that at rest the motor does not continue to turn.</div> <div>5) Verify that the pressure of the incoming fluid does not exceed from the one shown in the datasheet.</div>
The pump motor does not run	<div>1) Check the connection of the motor cable.</div> <div>2) Check the setting values of the controller.</div> <div>3) Check that the fluid has not hardened inside the pump.</div>
When fluid leaks out from the body of the pump	<div>1) Check the gaskets between the chamber and the motor.</div> <div>2) Check the O-ring between the chamber and the gasket block.</div>

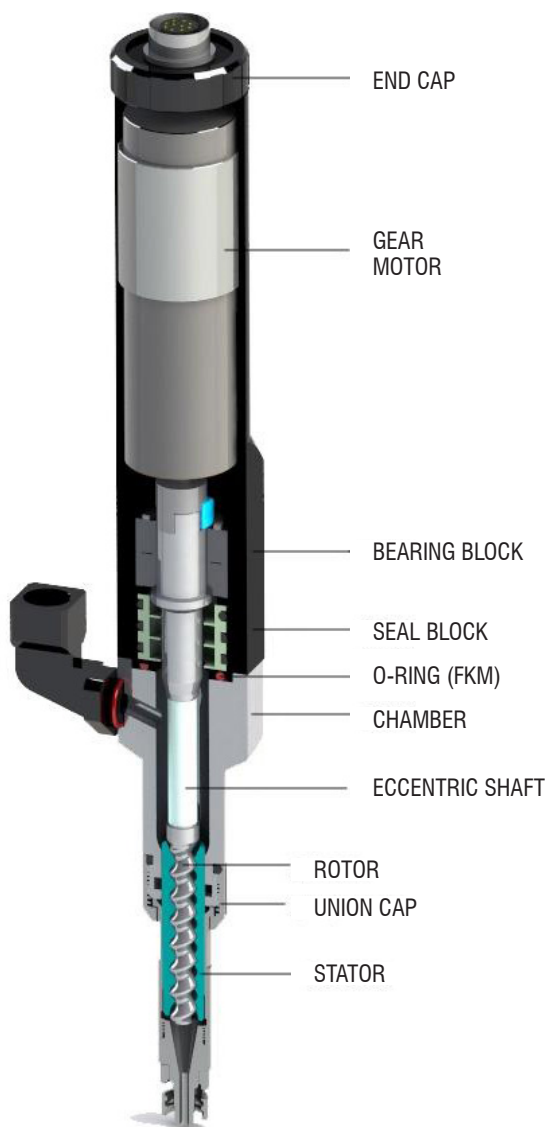
7 SYSTEM PRINCIPLES

The PCP progressive cavity pump is a volumetric pump that can dispense a uniform quantity of fluid independently of its viscosity. The pump is made up of a geared motor, a series of seals, a chamber, a rotor and a stator. Through an external controller it is possible to control with maximum precision the rotation of the rotor inside the stator and consequently the quantity of fluid dispensed and the speed with which it is dispensed. The series of seals allows the fluidic chamber and the eccentric shaft to be kept separate, avoiding the flow of fluid into the drive parts. The stator makes it possible to raise the fluid pressure by rotating the rotor inside it.

The PCP pump is a high-performance component but needs careful and timely use and maintenance.

Failure to maintain or use the pump in conditions that do not correspond to those indicated in this manual may result in total damage to the pump itself.

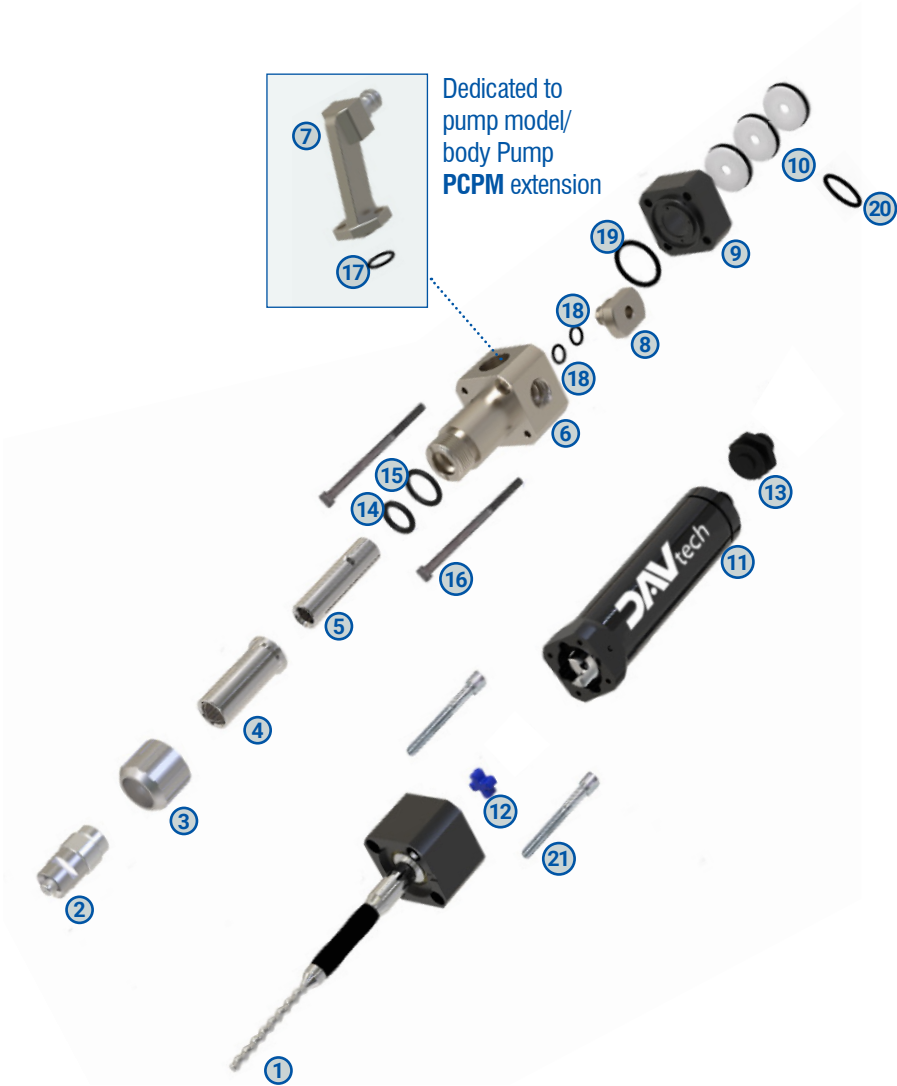
DAV Tech is pleased to support customers by advising them in the choice of the model that suits their needs, supplying spare parts or even signing scheduled maintenance contracts.



**PUMP STRUCTURE**

8 BREAKDOWNS

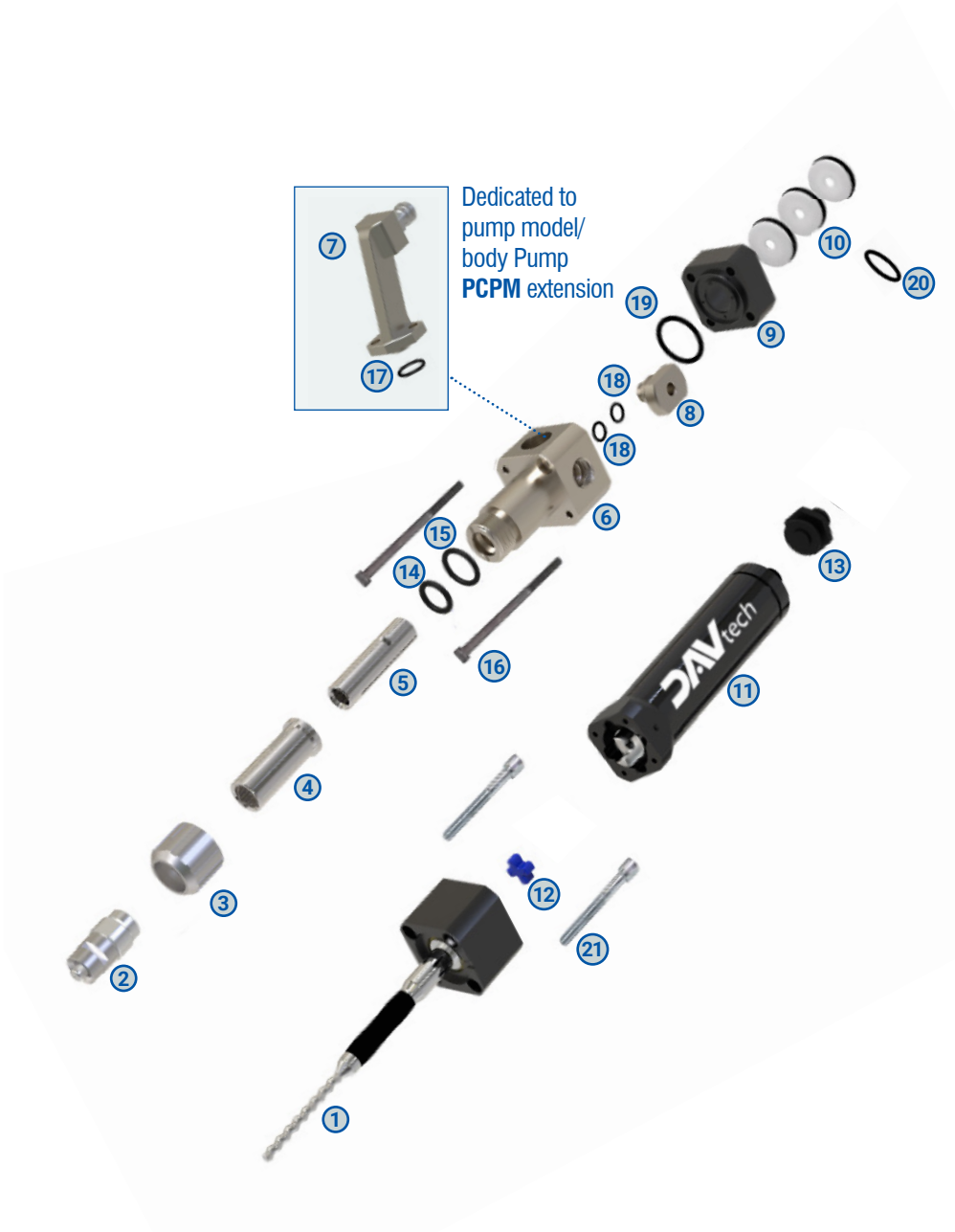
8.1 Breakdown PCP-005



## PCP-005 Components list

Ref.	Description		Code	Additional description
1	ROTOR ASSY (including component no. 12)	1.1	PCP-005-ROTOR	STAINLESS STEEL ROTOR ASSY PCP-005
		1.2	PCP-005-ROTOR-PP	POLYPROPYLENE ROTOR ASSY PCP-005
2	SMALL OUTLET ADAPTER PCP	2.1	PCP-LUER-S	SMALL LUER LOCK ADAPTOR PCP
		2.2	PCP-LUER-S-PEEK	SMALL LUER LOCK ADAPTOR PCP PEEK
		2.3	PCP-18-S	SMALL 1/8" ADAPTOR PCP
		2.4	PCP-18-S-PEEK	SMALL 1/8" ADAPTOR PCP PEEK
3	SMALL COLLAR RING PCP	-	PCP-NUT-S	-
4	STATOR SLEEVE	4.1	PCP-BUSH	STATOR SLEEVE PCP-005
		4.2	PCP-BUSH-PEEK	STATOR SLEEVE PCP-005 PEEK
5	STATOR ASSY	5.1	PCP-005-STATOR	FFKM STATOR ASSY PCP-005
		5.2	PCP-005-STATOR-EP	EPDM STATOR ASSY PCP-005
6	SMALL PCP PUMP BODY	6.1	PCP-BODY-S	STANDARD THREADED SMALL BODY PCP (SX)
		6.2	PCP-BODY-S-PEEK	PEEK THREADED SMALL BODY PCP (SX)
		6.3	PCPM-BODY-S	INLET MODULE SMALL BODY PCP (SX)
7	SMALL INLET ADAPTER PCP	7.1	PCPM-SYRINGE10CC	INLET ADAPTER PCP SYRINGE 10CC
		7.2	PCPM-SYRINGE3055CC-S	SMALL INLET ADAPTER PCP SYRINGE 30CC
		7.3	PCPM-310-S	SMALL INLET ADAPTER PCP CARTRIDGE 310CC
		7.4	PCPM-SEMCO-S	SMALL INLET ADAPTER PCP SEMCO 6 OZ
8	PURGE VALVE PCP	8.1	PCP-PURGE	MANUAL PURGE VALVE PCP
		8.2	PCP-PURGE-UV	MANUAL PURGE VALVE PCP FOR UV
		8.3	PCP-PURGE-PEEK	MANUAL PURGE VALVE PCP MADE OF PEEK
9	CORPO TENUTE PICCOLO PCP	9.1	PCP-SEALBLOCK-S	SMALL ROTARY SEAL BLOCK PCP
		9.2	PCP-SEALBLOCK-S-PEEK	SMALL ROTARY SEAL BLOCK PCP PEEK
10	SMALL ROTARY SEAL BODY PCP (x 1 pcs)	-	PCP-ROTARYSEAL	-
11	SMALL MOTOR ASSY PCP (including component no. 13)	-	PCP-MOTOR-S	-
12	SLEEVE MOTOR JOINT FOR SMALL MOTOR PCP	-	PCP-JOINT-S	-
13	SMALL MOTOR CONNECTOR PCP	-	PCP-CONNECTOR-S	-
14	O-RING FKM	-	PCP-A	-
15	O-RING FKM	-	PCP-B	-
16	SCREW SE (x2 pcs)	-	PCP-1	-
17	O-RING FKM	-	PCP-C	-
18	O-RING (x1 pcs) FKM	-	PCP-D	-
19	O-RING FKM	-	PCP-E	-
20	O-RING (x1 pcs) FKM	20.1	PCP-F	-
		20.2	PCP-F-FFKM	-
21	SCREW SET (x2 pcs)	-	PCP-2	-
		-	GASKETKIT-PCP005	-

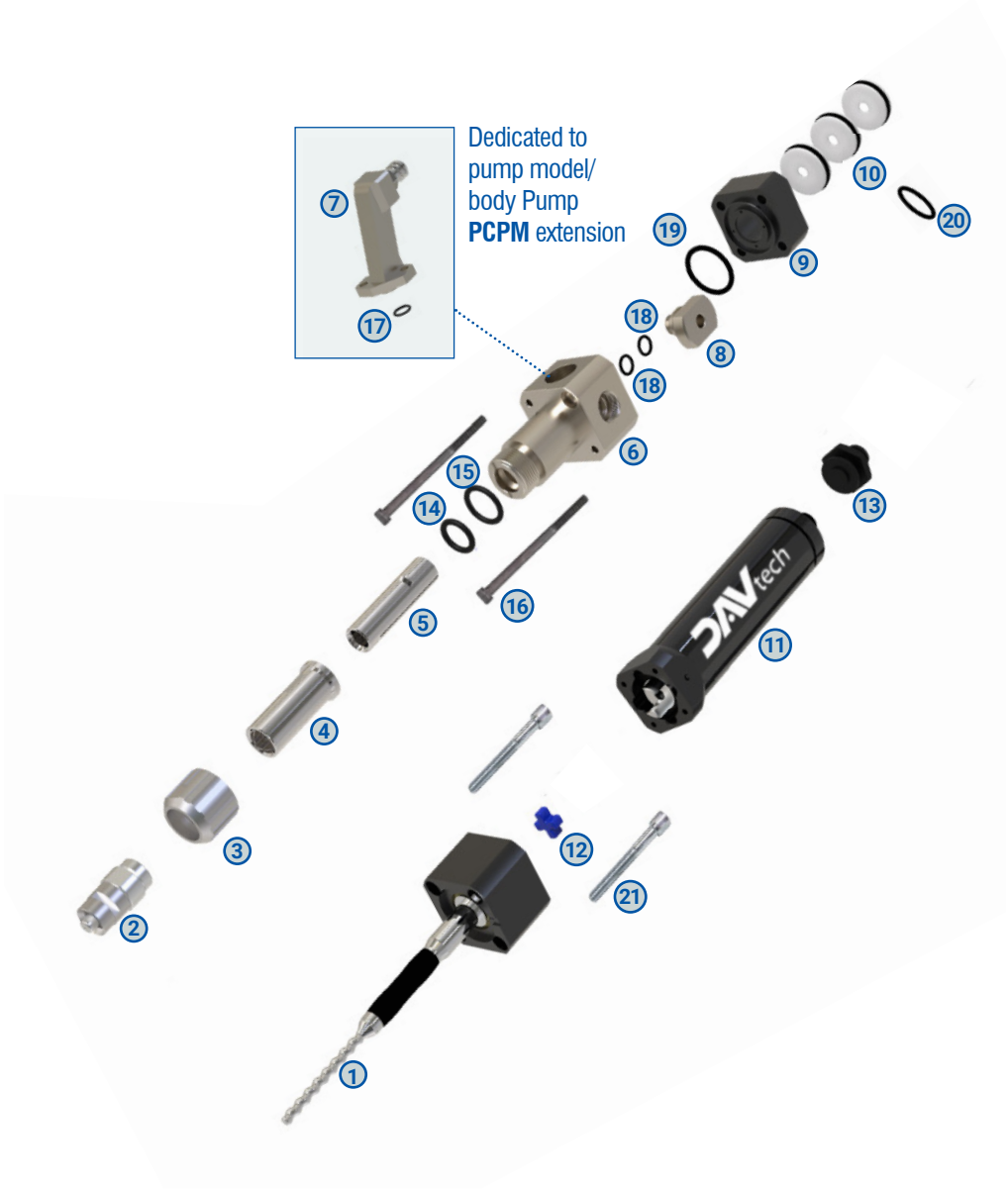
8.2 Breakdown PCP-015



## PCP-015 Components list

Ref.	Description		Code	Additional description
1	ROTOR ASSY (including component no. 12)			
		1.1	PCP-015-ROTOR	STAINLESS STEEL ROTOR ASSY PCP-015
		1.2	PCP-015-ROTOR-PP	POLYPROPYLENE ROTOR ASSY PCP-015
		1.3	PCP-015-ROTOR-TC	CARBIDE ROTOR ASSY PCP-015
		1.4	PCP-015-ROTOR-ZC	ZIRCONIA ROTOR ASSY PCP-015
2	SMALL OUTLET ADAPTER PCP			
		2.1	PCP-LUER-S	SMALL LUER LOCK ADAPTOR PCP
		2.2	PCP-LUER-S-PEEK	SMALL LUER LOCK ADAPTOR PCP PEEK
		2.3	PCP-18-S	SMALL 1/8" ADAPTOR PCP
		2.4	PCP-18-S-PEEK	SMALL 1/8" ADAPTOR PCP PEEK
3	SMALL COLLAR RING PCP	-	PCP-NUT-S	-
4	STATOR SLEEVE			
		4.1	PCP-BUSH	STATOR SLEEVE PCP-015
		4.2	PCP-BUSH-PEEK	STATOR SLEEVE PCP-015 PEEK
5	STATOR ASSY			
		5.1	PCP-015-STATOR	FFKM STATOR ASSY PCP-015
		5.2	PCP-015-STATOR-EP	EPDM STATOR ASSY PCP-015
6	SMALL PCP / PCPM PUMP BODY			
		6.1	PCP-BODY-S	STANDARD THREADED SMALL BODY PCP (SX)
		6.2	PCP-BODY-S-PEEK	PEEK THREADED SMALL BODY PCP (SX)
		6.3	PCPM-BODY-S	INLET MODULE SMALL BODY PCP (SX)
7	SMALL INLET ADAPTER PCPM			
		7.1	PCPM-SYRINGE10CC	INLET ADAPTER PCP SYRINGE 10CC
		7.2	PCPM-SYRINGE3055CC-S	SMALL INLET ADAPTER PCP SYRINGE 30CC
		7.3	PCPM-310-S	SMALL INLET ADAPTER PCP CARTRIDGE 310CC
		7.4	PCPM-SEMCO-S	SMALL INLET ADAPTER PCP SEMCO 6 OZ
8	PURGE VALVE PCP			
		8.1	PCP-PURGE	MANUAL PURGE VALVE PCP
		8.2	PCP-PURGE-UV	MANUAL PURGE VALVE PCP FOR UV
		8.3	PCP-PURGE-PEEK	MANUAL PURGE VALVE PCP MADE OF PEEK
9	SMALL ROTARY SEAL BODY PCP			
		9.1	PCP-SEALBLOCK-S	SMALL ROTARY SEAL BLOCK PCP
		9.2	PCP-SEALBLOCK-S-PEEK	SMALL ROTARY SEAL BLOCK PCP PEEK
10	ROTARY SEAL FOR PCP (x 1 pcs)	-	PCP-ROTARYSEAL	-
11	SMALL MOTOR ASSY PCP (including component no. nr. 13)	-	PCP-MOTOR-S	-
12	SLEEVE MOTOR JOINT FOR SMALL MOTOR PCP	-	PCP-JOINT-S	-
13	SMALL MOTOR CONNECTOR PCP	-	PCP-CONNECTOR-S	-
14	O-RING FKM	-	PCP-A	-
15	O-RING FKM	-	PCP-B	-
16	SCREW SET (x2 pcs)	-	PCP-1	-
17	O-RING FKM	-	PCP-C	-
18	O-RING (x1 pcs) FKM	-	PCP-D	-
19	O-RING FKM	-	PCP-E	-
20	O-RING (x1 pcs) FKM			
		20.1	PCP-F	-
		20.2	PCP-F-FFKM	-
21	SCREW SET (x2 pcs)	-	PCP-2	-
	KIT O-RING PCP-015	-	GASKETKIT-PCP015	-

8.3 Breakdown PCP-050





## PCP-050 Components list

Ref.	Description		Code	Additional description
1	ROTOR ASSY (including component no. 12)			
		1.1	PCP-050-ROTOR	STAINLESS STEEL ROTOR ASSY PCP-050
		1.2	PCP-050-ROTOR-PP	POLYPROPYLENE ROTOR ASSY PCP-050
		1.3	PCP-050-ROTOR-TC	CARBIDE ROTOR ASSY PCP-050
		1.4	PCP-050-ROTOR-ZC	ZIRCONIA ROTOR ASSY PCP-050
2	SMALL OUTLET ADAPTER PCP			
		2.1	PCP-LUER-S	SMALL LUER LOCK ADAPTOR PCP
		2.2	PCP-LUER-S-PEEK	SMALL LUER LOCK ADAPTOR PCP PEEK
		2.3	PCP-18-S	SMALL 1/8" ADAPTOR PCP
		2.4	PCP-18-S-PEEK	SMALL 1/8" ADAPTOR PCP PEEK
3	SMALL COLLAR RING PCP	-	PCP-NUT-S	-
4	STATOR SLEEVE			
		4.1	PCP-BUSH	STATOR SLEEVE PCP-050
		4.2	PCP-BUSH-PEEK	STATOR SLEEVE PCP-050 PEEK
5	STATOR ASSY			
		5.1	PCP-050-STATOR	FFKM STATOR ASSY PCP-050
		5.2	PCP-050-STATOR-EP	EPDM STATOR ASSY PCP-050
6	SMALL PCP PUMP BODY			
		6.1	PCP-BODY-S	STANDARD THREADED SMALL BODY PCP (SX)
		6.2	PCP-BODY-S-PEEK	PEEK THREADED SMALL BODY PCP (SX)
		6.3	PCPM-BODY-S	INLET MODULE SMALL BODY PCP (SX)
7	SMALL INLET ADAPTER PCP			
		7.1	PCPM-SYRINGE10CC	INLET ADAPTER PCP SYRINGE 10CC
		7.2	PCPM-SYRINGE305CC-S	SMALL INLET ADAPTER PCP SYRINGE 30CC
		7.3	PCPM-310-S	SMALL INLET ADAPTER PCP CARTRIDGE 310CC
		7.4	PCPM-SEMCO-S	SMALL INLET ADAPTER PCP SEMCO 6 OZ
8	PURGE VALVE PCP			
		8.1	PCP-PURGE	MANUAL PURGE VALVE PCP
		8.2	PCP-PURGE-UV	MANUAL PURGE VALVE PCP FOR UV
		8.3	PCP-PURGE-PEEK	MANUAL PURGE VALVE PCP MADE OF PEEK
9	SMALL ROTARY SEAL BODY PCP			
		9.1	PCP-SEALBLOCK-S	SMALL ROTARY SEAL BLOCK PCP
		9.2	PCP-SEALBLOCK-S-PEEK	SMALL ROTARY SEAL BLOCK PCP PEEK
10	ROTARY SEAL FOR PCP (x 1 pcs)	-	PCP-ROTARYSEAL	-
11	SMALL MOTOR ASSY PCP (including component no.13)	-	PCP-MOTOR-S	-
12	SLEEVE MOTOR JOINT FOR SMALL MOTOR PCP	-	PCP-JOINT-S	-
13	SMALL MOTOR CONNECTOR PCP	-	PCP-CONNECTOR-S	-
14	O-RING FKM	-	PCP-A	-
15	O-RING FKM	-	PCP-B	-
16	SCREW SET (x2 pcs)	-	PCP-1	-
17	O-RING FKM	-	PCP-C	-
18	O-RING (x1 pcs) FKM	-	PCP-D	-
19	O-RING FKM	-	PCP-E	-
20	O-RING (x1 pcs) FKM			
		20.1	PCP-F	-
		20.2	PCP-F-FFKM	-
21	SCREW SET (x2 pcs)	-	PCP-2	-
	KIT O-RING PCP-050	-	GASKETKIT-PCP050	-

8.4 Breakdown PCP-150

Dedicated to  
pump model/  
body Pump  
**PCPM** extension

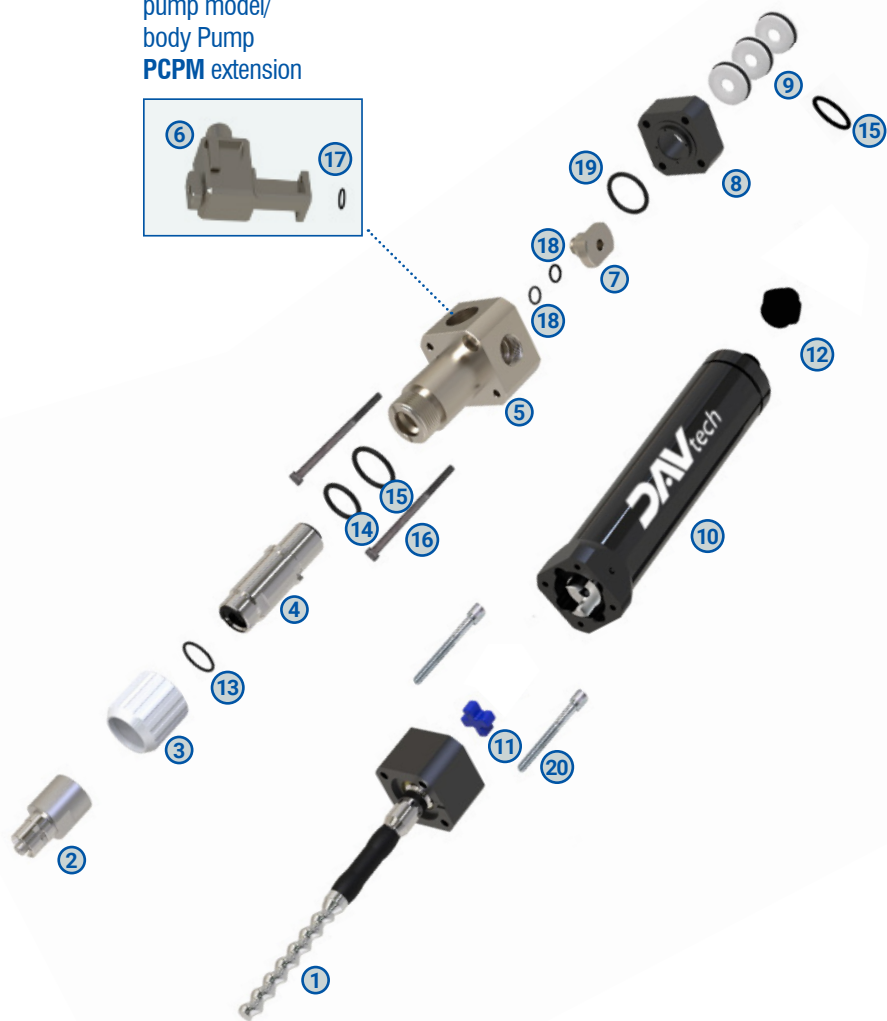


## PCP-150 Components list

Ref.	Description		Code	Additional description
1	ROTOR ASSY (including component no. 12)			
		1.1	PCP-150-ROTOR	ROTOR ASSY STAINLESS STEEL PCP-150
		1.2	PCP-150-ROTOR-TC	ROTOR ASSY CARBIDE PCP-150
		1.3	PCP-150-ROTOR-ZC	ROTOR ASSY ZIRCONIA PCP-150
2	BIG OUTLET ADAPTER PCP			
		2.1	PCP-LUER-B	BIG LUER LOCK ADAPTOR PCP
		2.2	PCP-LUER-B-PEEK	BIG LUER LOCK ADAPTOR PCP PEEK
		2.3	PCP-18-B	BIG 1/8" ADAPTOR PCP
		2.4	PCP-18-B-PEEK	BIG 1/8" ADAPTOR PCP PEEK
3	BIG COLLAR RING PCP	-	PCP-NUT-B	-
4	STATOR ASSY			
		4.1	PCP-150-STATOR	FFKM STATOR ASSY PCP-150
		4.2	PCP-150-STATOR-EP	EPDM STATOR ASSY PCP-150
5	BIG PCP/PCPM PUMP BODY			
		5.1	PCP-BODY-B	STANDARD THREADED BIG BODY PCP (SX)
		5.2	PCP-BODY-B-PEEK	PEEK THREADED BIG BODY PCP (SX)
		5.3	PCPM-BODY-B	INLET MODULE BIG BODY PCP (SX)
6	BIG INLET ADAPTER PCP			
		6.1	PCPM-SYRINGE3055CC-B	BIG INLET ADAPTER PCP SYRINGE 30CC
		6.2	PCPM-310-B	BIG INLET ADAPTER PCP CARTRIDGE 310CC
		6.3	PCPM-SEMCO-B	BIG INLET ADAPTER PCP SEMCO 6 OZ
7	PURGE VALVE PCP			
		7.1	PCP-PURGE	MANUAL PURGE VALVE PCP
		7.2	PCP-PURGE-UV	MANUAL PURGE VALVE PCP FOR UV
		7.3	PCP-PURGE-PEEK	MANUAL PURGE VALVE PCP MADE OF PEEK
8	BIG ROTARY SEAL BODY PCP			
		8.1	PCP-SEALBLOCK-B	BIG ROTARY SEAL BLOCK PCP
		8.2	PCP-SEALBLOCK-B-PEEK	BIG ROTARY SEAL BLOCK PCP PEEK
9	ROTARY SEAL FOR PCP (x 1 pcs)	-	PCP-ROTARYSEAL	-
10	ASSIEME MOTORE GRANDE PCP (comprensivo del componente nr. 12)	-	PCP-MOTOR-B	-
11	SLEEVE MOTOR JOINT FOR BIG MOTOR PCP	-	PCP-JOINT-B	-
12	BIG MOTOR CONNECTOR PCP	-	PCP-CONNECTOR-B	-
13	O-RING FKM	-	PCP-G	-
14	O-RING FKM	-	PCP-H	-
15	O-RING (x1 pcs) FKM			
		15.1	PCP-F	-
		15.2	PCP-F-FFKM	-
16	SCREW SET (x2 pcs)	-	PCP-1	-
17	O-RING FKM	-	PCP-C	-
18	O-RING (x1 pcs) FKM	-	PCP-D	-
19	O-RING FKM	-	PCP-E	-
20	SCREW SET (x2 pcs)	-	PCP-2	-
	KIT O-RING PCP-150	-	GASKETKIT-PCP150	-

8.5 Breakdown PCP-500

Dedicated to  
pump model/  
body Pump  
**PCPM** extension

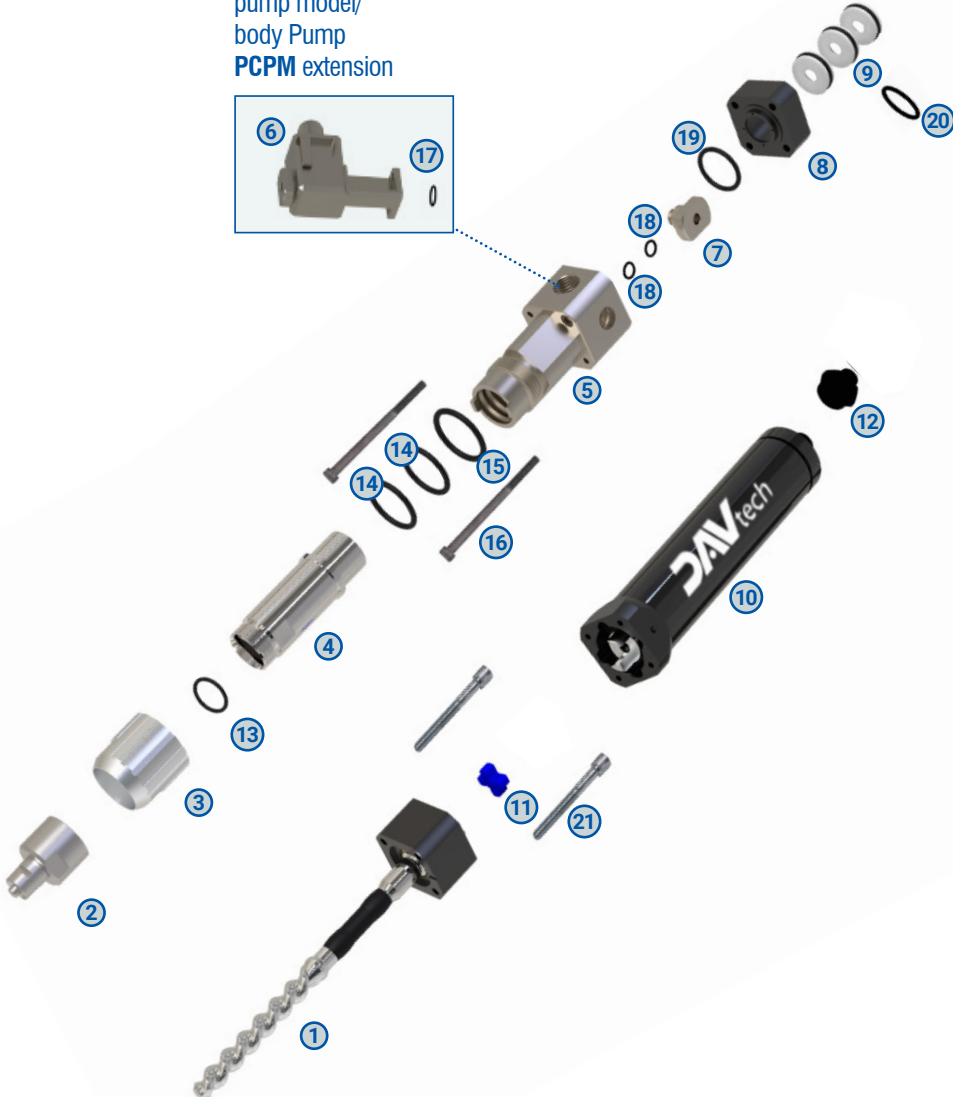
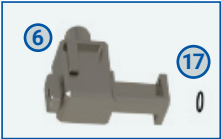


## PCP-500 Components list

Ref.	Description		Code	Additional description
1	ROTOR ASSY (including component no. 12)			
		1.1	PCP-500-ROTOR	ROTOR ASSY STAINLESS STEEL PCP-500
		1.2	PCP-500-ROTOR-TC	ROTOR ASSY CARBIDE PCP-500
		1.3	PCP-500-ROTOR-ZC	ROTOR ASSY ZIRCONIA PCP-500
2	BIG OUTLET ADAPTER PCP			
		2.1	PCP-LUER-B	BIG LUER LOCK ADAPTOR PCP
		2.2	PCP-18-B	BIG 1/8" ADAPTOR PCP
3	BIG COLLAR RING PCP	-	PCP-NUT-B	-
4	STATOR ASSY			
		4.1	PCP-500-STATOR	FFKM STATOR ASSY PCP-500
		4.2	PCP-500-STATOR-EP	EPDM STATOR ASSY PCP-500
5	BIG PCP / PCPM PUMP BODY			
		5.1	PCP-BODY-B	STANDARD THREADED BIG BODY PCP (SX)
		5.2	PCPM-BODY-B	INLET MODULE BIG BODY PCP (SX)
6	BIG INLET ADAPTER PCPM			
		6.1	PCPM-SYRINGE3055CC-B	BIG INLET ADAPTER PCP SYRINGE 30CC
		6.2	PCPM-310-B	BIG INLET ADAPTER PCP CARTRIDGE 310CC
		6.3	PCPM-SEMCO-B	BIG INLET ADAPTER PCP SEMCO 6 OZ
7	PURGE VALVE PCP			
		7.1	PCP-PURGE	MANUAL PURGE VALVE PCP
		7.2	PCP-PURGE-UV	MANUAL PURGE VALVE PCP FOR UV
8	BIG ROTARY SEAL BODY PCP	-	PCP-SEALBLOCK-B	BIG ROTARY SEAL BLOCK PCP
9	ROTARY SEAL FOR PCP (x 1 pcs)	-	PCP-ROTARYSEAL	-
10	BIG MOTOR ASSY PCP (including component no. 12)	-	PCP-MOTOR-B	-
11	SLEEVE MOTOR JOINT FOR BIG MOTOR PCP	-	PCP-JOINT-B	-
12	BIG MOTOR CONNECTOR PCP	-	PCP-CONNECTOR-B	-
13	O-RING FKM	-	PCP-G	-
14	O-RING FKM	-	PCP-H	-
15	O-RING (x1 pcs) FKM			
		15.1	PCP-F	-
		15.2	PCP-F-FFKM	-
16	SCREW SET (x2 pcs)	-	PCP-1	-
17	O-RING FKM	-	PCP-C	-
18	O-RING (x1 pcs) FKM	-	PCP-D	-
19	O-RING FKM	-	PCP-E	-
20	SCREW SET (x2 pcs)	-	PCP-2	-
	KIT O-RING PCP-500	-	GASKETKIT-PCP500	-

8.6 Breakdown PCP-1000

Dedicated to  
pump model/  
body Pump  
**PCPM** extension



## PCP-1000 Components list

Ref.	Description		Code	Additional description
1	ROTOR ASSY (including component no. 12)			
		1.1	PCP-1000-ROTOR	ROTOR ASSY STAINLESS STEEL PCP-1000
		1.2	PCP-1000-ROTOR-TC	ROTOR ASSY CARBIDE PCP-1000
		1.3	PCP-1000-ROTOR-ZC	ROTOR ASSY ZIRCONIA PCP-1000
2	PCP-1000 OUTLET ADAPTER			
		2.1	PCP-LUER-1000	PCP-1000 LUER LOCK ADAPTOR
		2.2	PCP-14-1000	PCP-1000 1/4" ADAPTOR
3	PCP-1000 COLLAR RING	-	PCP-NUT-1000	-
4	STATOR ASSY			
		4.1	PCP-1000-STATOR	FFKM STATOR ASSY PCP-1000
		4.2	PCP-1000-STATOR-EP	EPDM STATOR ASSY PCP-1000
5	BIG PCP / PCPM PUMP BODY			
		5.1	PCP-BODY-1000	STANDARD THREADED BIG BODY PCP (SX)
		5.2	PCPM-BODY-1000	INLET MODULE BIG BODY PCP (SX)
6	BIG INLET ADAPTER PCP			
		6.1	PCPM-SYRINGE3055CC-B	BIG INLET ADAPTER PCP SYRINGE 30CC
		6.2	PCPM-310-B	BIG INLET ADAPTER PCP CARTRIDGE 310CC
		6.3	PCPM-SEMCO-B	BIG INLET ADAPTER PCP SEMCO 6 OZ
7	PURGE VALVE PCP			
		7.1	PCP-PURGE	MANUAL PURGE VALVE PCP
		7.2	PCP-PURGE-UV	MANUAL PURGE VALVE PCP FOR UV
8	BIG ROTARY SEAL BODY PCP	-	PCP-SEALBLOCK-B	BIG ROTARY SEAL BLOCK PCP
9	ROTARY SEAL FOR PCP (x 1 pcs)	-	PCP-ROTARYSEAL	-
10	BIG MOTOR ASSY PCP (including component no. 12)	-	PCP-MOTOR-B	-
11	SLEEVE MOTOR JOINT FOR BIG MOTOR PCP	-	PCP-JOINT-B	-
12	BIG MOTOR CONNECTOR PCP	-	PCP-CONNECTOR-B	-
13	O-RING FKM	-	PCP-I	-
14	O-RING FKM (x1 pcs)	-	PCP-L	-
15	O-RING FKM	-	PCP-M	-
16	SCREW SET (x2 pcs)	-	PCP-3	-
17	O-RING FKM	-	PCP-C	-
18	O-RING (x1 pcs) FKM	-	PCP-D	-
19	O-RING FKM	-	PCP-E	-
20	O-RING (x1 pcs) FKM			
		20.1	PCP-F	-
		20.2	PCP-F-FFKM	-
21	SCREW SET (x2 pcs)	-	PCP-2	-
	KIT O-RING PCP-1000	-	GASKETKIT-PCP1000	-

## 8.7 Other general components

Description	Code	Photo
PRESSURE SENSOR PCP - PDP	PCP-PRESSURESENSOR	
MOTR CABLE PCP 2 MT	CABLEPCP-2MT	
MOTR CABLE PCP 7 MT	CABLEPCP-7MT	
MOTR CABLE PCP 10 MT	CABLEPCP-10MT	
CONTROLLER BASIC CONTROLLER FOR PCP	CONTROLLER-PCP	
CONTROLLER EVO CONTROLLER FOR PCP	CONTROLLER-PCP-EVO	
PROFINET/MODBUS DRIVER PCP	DRIVE-PCP-PROFINET DRIVE-PCP-MODBUS DRIVE-CONTROLLER-PCP-EVO	
PCP DISASSEMBLY KEY	PCP-TOOL-S PCP-TOOL-B PCP-TOOL-1000	
STATOR DISASSEMBLY TOOL	PCP-TOOLMOTOR-S PCP-TOOLMOTOR-B	
ADDITIONAL MODULE FOR PRESSURE SENSOR	PCP-PRESSUREOUTLET-S PCP-PRESSUREOUTLET-B PCP-PRESSUREOUTLET-1000	